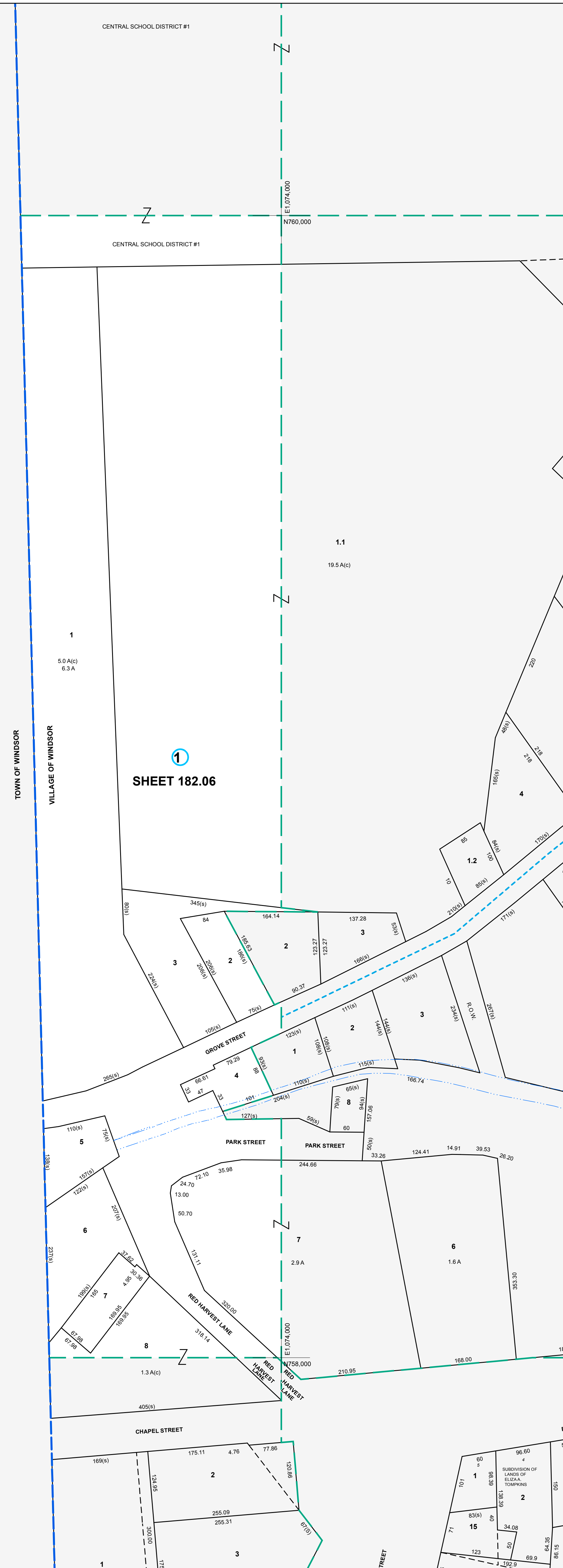


E 1,077,000
N 756,000

E 1,077,000
N 756,000



TOWN OF WINDSOR
VILLAGE OF WINDSOR

1
SHEET 182.06



MAP REVISIONS		
DATE	MADE BY	REVISIONS

SCHOOL DISTRICT AND SPECIAL DISTRICTS	
FIRE: WINDSOR FIRE DISTRICT	SCHOOL: WINDSOR CENTRAL SCHOOL DISTRICT

LEGEND	
PROPERTY LINE	———
RIGHT OF WAY LINE	———
MUNICIPAL BOUNDARY	———
SUBDIVISION LIMIT	———
COUNTY LINE	———
ORIGINAL LOT LINE	———
RAILROAD	———
STREAM	———
BLOCK LIMIT	———
SCHOOL DISTRICT LINE	———
FIRE DISTRICT LINE	———
DENOTES COMMON OWNER	①
PARCEL NUMBER	10
ORIGINAL SUBD LOT NUMBER	10
TAX MAP BLOCK NUMBER	①

TAX MAP PARCEL NUMBER	08.00-1-10
CALCULATED ACREAGE	20.5 A(c)
DEED ACREAGE	20.5 A
SCALED DIMENSION (FEET)	150 (3)
DEED DIMENSION (FEET)	150
COORDINATE LOCATOR	•

1983 North American Datum
New York State Plane, Central Zone

THIS MAP WAS PRODUCED FOR TAX PURPOSES ONLY AND IS NOT TO BE REPRODUCED OR USED FOR SURVEYING OR CONVEYANCING

TOWN	166.18	166.19
OF	182.07	182.11
WINDSOR	182.10	182.11

TAX MAP
VILLAGE OF WINDSOR
BROOME COUNTY, NEW YORK

MAP DATE 2/28/1995

GRAPHIC SCALE - 1" = 100'

182.06