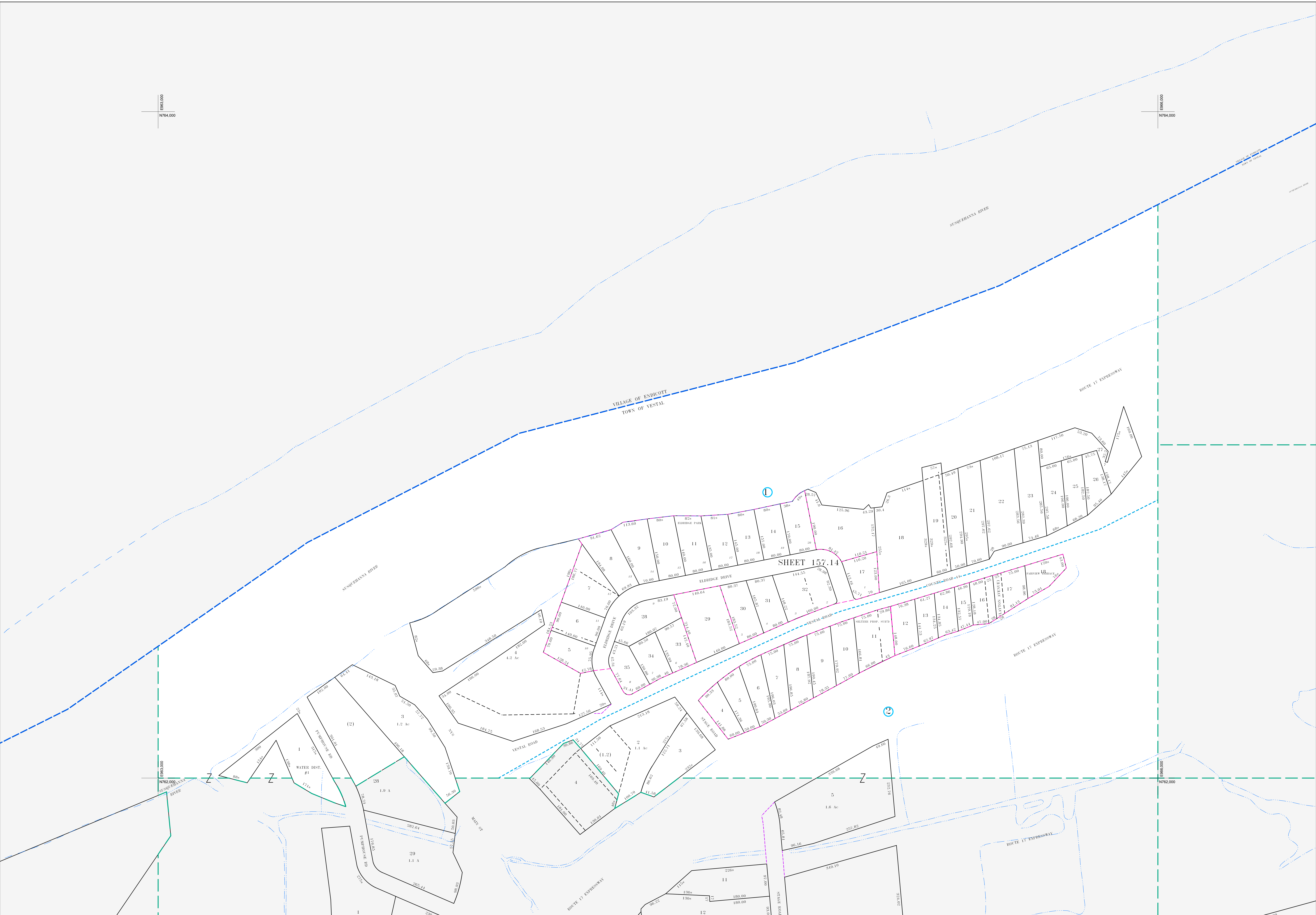


E893.000
N764.000

E896.000
N764.000



SHEET 157.14



MAP REVISIONS		
DATE	MADE BY	REVISIONS
1/7/2010	DC	157.14-2-12 OUT OF 157.14-2-2
3/1/2002	DC	157.14-2-19 OUT OF 157.14-2-2
11/19/2001	DC	2000: Street into 157.14-2-16 & 17
3/29/2001	DC	157.14-0-19 OUT OF COUNTY ROAD
2/2/1996	TR	157.14-2-1.2 OUT OF 157.14-2-1

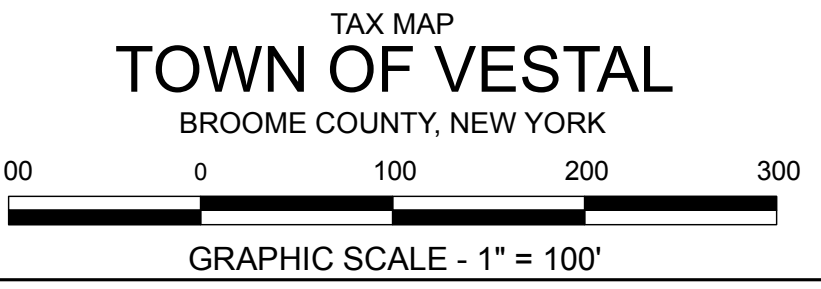
SCHOOL DISTRICT AND SPECIAL DISTRICTS	
FIRE: VESTAL FIRE DISTRICT	SCHOOL: VESTAL SCHOOL DISTRICT

LEGEND	
PROPERTY LINE	———
RIGHT OF WAY LINE	———
MUNICIPAL BOUNDARY	———
SUBDIVISION LIMIT	———
COUNTY LINE	———
ORIGINAL LOT LINE	———
RAILROAD	———
STREAM	———
BLOCK LIMIT	———
SCHOOL DISTRICT LINE	———
FIRE DISTRICT LINE	———
NOTES COMMON OWNER	①
PARCEL NUMBER	10
ORIGINAL SUBLOT NUMBER	10
TAX MAP BLOCK NUMBER	①
TAX MAP PARCEL NUMBER	08.00-1-10
CALCULATED ACREAGE	20.5 A(±)
DEED ACREAGE	20.5 A
SCALED DIMENSION (FEET)	150 (±)
DEED DIMENSION (FEET)	150
COORDINATE LOCATOR	•

1983 North American Datum New York State Plane, Central Zone	
VILLAGE	OF
ENDICOTT	157.57
157.17	157.18 157.19

THIS MAP WAS PRODUCED FOR TAX PURPOSES ONLY AND IS NOT TO BE REPRODUCED OR USED FOR SURVEYING OR CONVEYANCING

TAX MAP	
TOWN OF VESTAL	
BROOME COUNTY, NEW YORK	
MAP DATE: 7/31/1995	



157.14