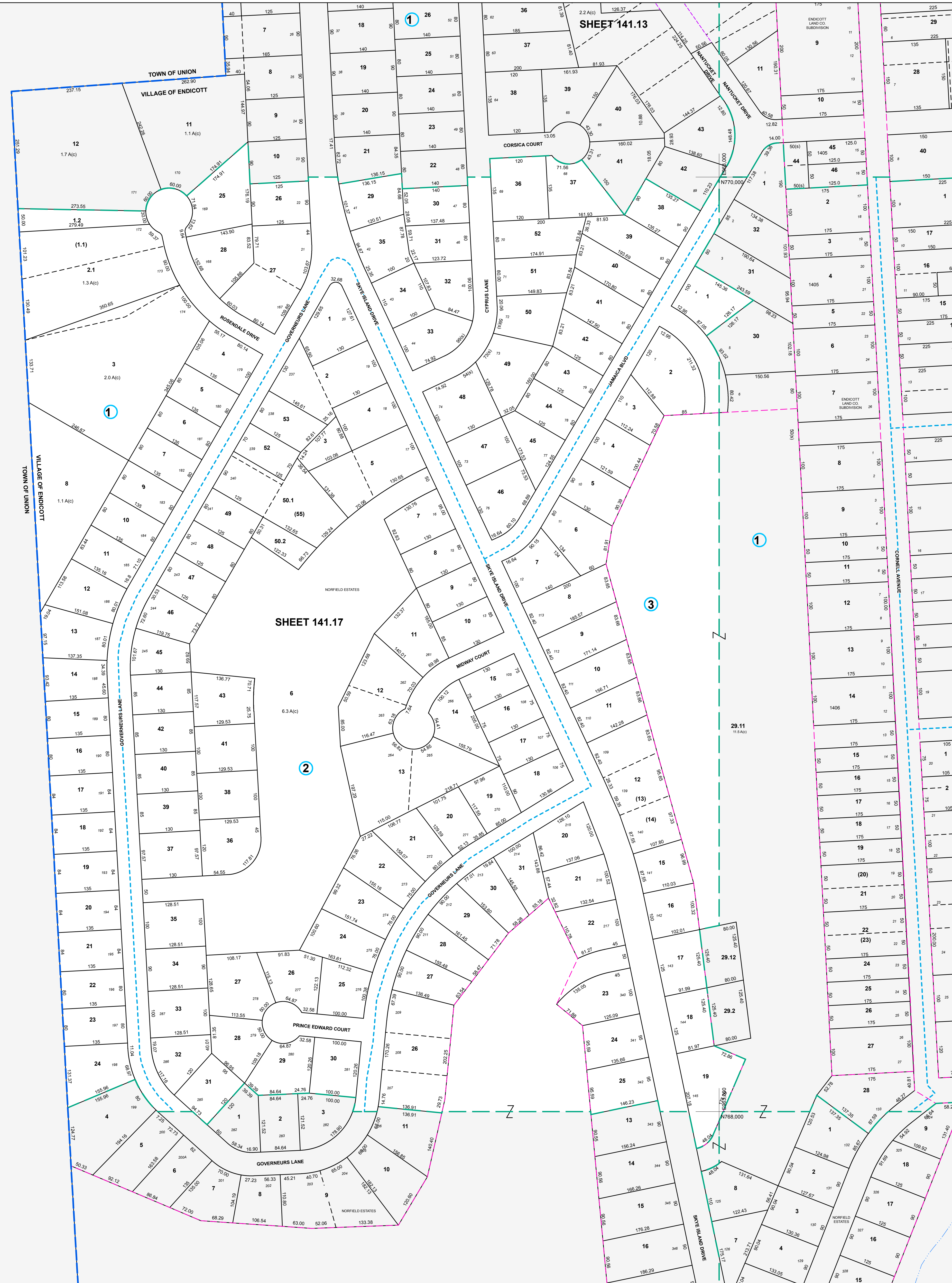


EP860.000
N770.000

EP860.000
N768.000



| MAP REVISIONS | | |
|---------------|---------|---------------------------------|
| DATE | MADE BY | REVISIONS |
| 8/2/2008 | DC | 141.17-2-50.2 out of 50 |
| 3/12/2006 | MAS | Comb 141.17-1.1 & 141.17-1.2-1 |
| 8/2/2002 | DC | 141.17-2-56 of 141.17-2-50 |
| 9/26/2000 | ENB | COMBINE PART OF 141.17-1-2 INTO |
| 9/26/2000 | ENB | 141.17-1-3 |

| SCHOOL DISTRICT AND SPECIAL DISTRICTS | |
|---------------------------------------|--|
| FIRE: ENDICOTT FIRE DISTRICT | SCHOOL: UNION-ENDICOTT SCHOOL DISTRICT |

| LEGEND | |
|--------------------|----------------------|
| PROPERTY LINE | RAILROAD |
| RIGHT OF WAY LINE | STREAM |
| MUNICIPAL BOUNDARY | BLOCK LIMIT |
| SUBDIVISION LIMIT | SCHOOL DISTRICT LINE |
| COUNTY LINE | FIRE DISTRICT LINE |
| ORIGINAL LOT LINE | |

| NOTES COMMON OWNER | |
|---------------------------|----|
| PARCEL NUMBER | 10 |
| ORIGINAL SUBID LOT NUMBER | 10 |
| TAX MAP BLOCK NUMBER | 1 |

1983 North American Datum
New York State Plane, Central Zone

THIS MAP WAS PRODUCED FOR TAX PURPOSES ONLY AND IS NOT TO BE REPRODUCED OR USED FOR SURVEYING OR CONVEYANCING

| TOWN | 141.13 | 141.14 |
|-------|--------|--------|
| OF | 141.18 | |
| UNION | 157.05 | 157.06 |

TAX MAP
VILLAGE OF ENDICOTT
BROOME COUNTY, NEW YORK

MAP DATE: 7/1/1995

GRAPHIC SCALE - 1" = 100'

141.17