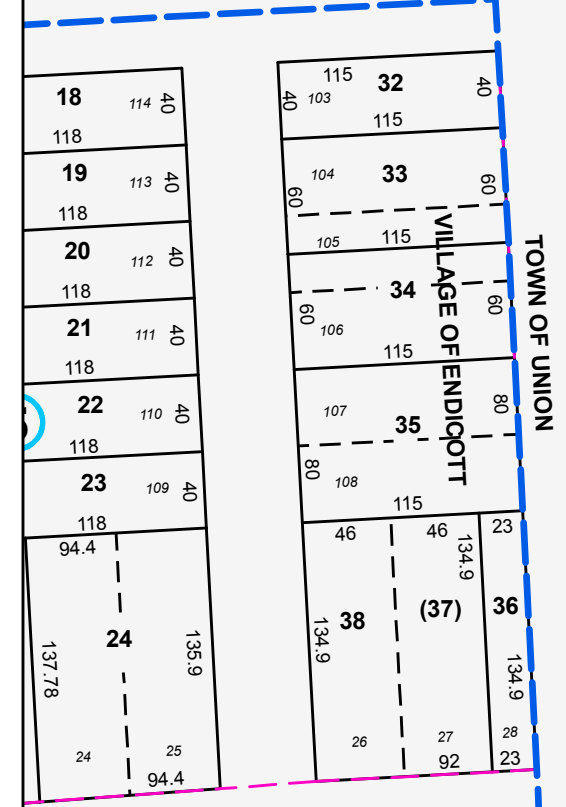


E896.000
N772.000

E896.000
N772.000



MAP REVISIONS		
DATE	MADE BY	REVISIONS
3/1/2007	MAS	Comb 141.15-4.2 into 141.15-5.3
1/26/2005	MAS	Comb 141.15-5.32 into 141.15-5.33
10/21/2004	MAS	Comb 141.15-1.31 into 141.15-3.40
1/22/2001	DC	141.15-1.25 C1 141.15-1.29
12/14/2000	DC	COMB. P.O. STREETS INTO 141.15-1.1

SCHOOL DISTRICT AND SPECIAL DISTRICTS		
FIRE: ENDICOTT FIRE DISTRICT	SCHOOL: UNION-ENDICOTT SCHOOL DISTRICT	

LEGEND	
PROPERTY LINE	RAILROAD
RIGHT OF WAY LINE	STREAM
MUNICIPAL BOUNDARY	BLOCK LIMIT
SUBDIVISION LIMIT	SCHOOL DISTRICT LINE
COUNTY LINE	FIRE DISTRICT LINE
ORIGINAL LOT LINE	
DENOTES COMMON OWNER	PARCEL NUMBER
10	ORIGINAL SUBD LOT NUMBER
10	TAX MAP BLOCK NUMBER

TAX MAP PARCEL NUMBER	08.00-1.10
CALCULATED ACREAGE	20.5 A(c)
DEED ACREAGE	20.5 A
SCALED DIMENSION (FEET)	150 (s)
DEED DIMENSION (FEET)	150
COORDINATE LOCATOR	*

1983 North American Datum
New York State Plane, Central Zone

THIS MAP WAS PRODUCED FOR TAX PURPOSES ONLY AND IS NOT TO BE REPRODUCED OR USED FOR SURVEYING OR CONVEYANCING

TOWN	OF	UNION
141.14	TOWN OF	UNION
141.18	141.19	UNION

TAX MAP
VILLAGE OF ENDICOTT
BROOME COUNTY, NEW YORK

MAP DATE 7/1/1995

GRAPHIC SCALE - 1" = 100'