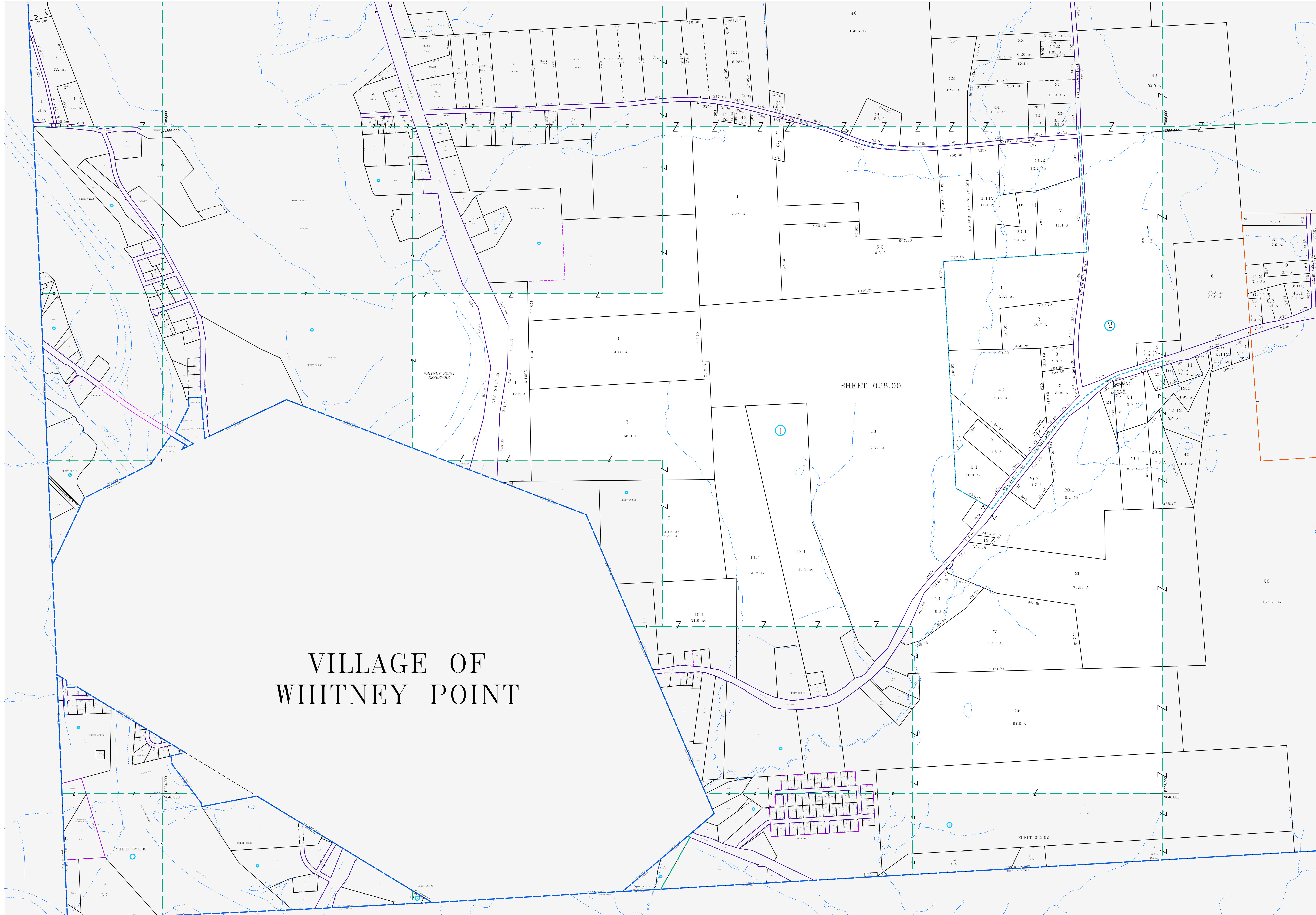


VILLAGE OF WHITNEY POINT

SHEET 028.00



MAP REVISIONS		
DATE	MADE BY	REVISIONS
8/17/2010	DMC	pl's 028.00-1-12 of 028.19-1-5
12/17/2009	DMC	028.00-2-2 out of 4
12/24/2003	DMC	028.00-1-20.2 out of 20
9/23/2003	DMC	028.19-1-34 out of 028.00-1-11
4/29/2003	DMC	028.00-1-6.112 out of 6.11

SCHOOL DISTRICT AND SPECIAL DISTRICTS	
FIRE: WHITNEY POINT FIRE DISTRICT	SCHOOL: WHITNEY POINT CENTRAL SCHOOL

LEGEND	
PROPERTY LINE	———
RIGHT OF WAY LINE	———
MUNICIPAL BOUNDARY	———
SUBDIVISION LIMIT	———
COUNTY LINE	———
ORIGINAL LOT LINE	———
RAILROAD	———
STREAM	———
BLOCK LIMIT	———
SCHOOL DISTRICT LINE	———
FIRE DISTRICT LINE	———
DENOTES COMMON OWNER	①
PARCEL NUMBER	10
ORIGINAL SUBD LOT NUMBER	10
TAX MAP BLOCK NUMBER	①
TAX MAP PARCEL NUMBER	08.00-1-10
CALCULATED ACREAGE	20.5 A(c)
DEED ACREAGE	20.5 A
SCALED DIMENSION (FEET)	150 (9)
DEED DIMENSION (FEET)	150
COORDINATE LOCATOR	*

1983 North American Datum New York State Plane, Central Zone	
THIS MAP WAS PRODUCED FOR TAX PURPOSES ONLY AND IS NOT TO BE REPRODUCED OR USED FOR SURVEYING OR CONVEYANCING	

021.03	021.00	022.00
2805	2809	029.00
035.05	3506	BARKER
MAP DATE 4/15/1994		

TAX MAP	
TOWN OF TRIANGLE	
BROOME COUNTY, NEW YORK	
400	0 400 800 1200
GRAPHIC SCALE - 1" = 400'	

MAP DATE 4/15/1994	
GRAPHIC SCALE - 1" = 400'	
028.00	