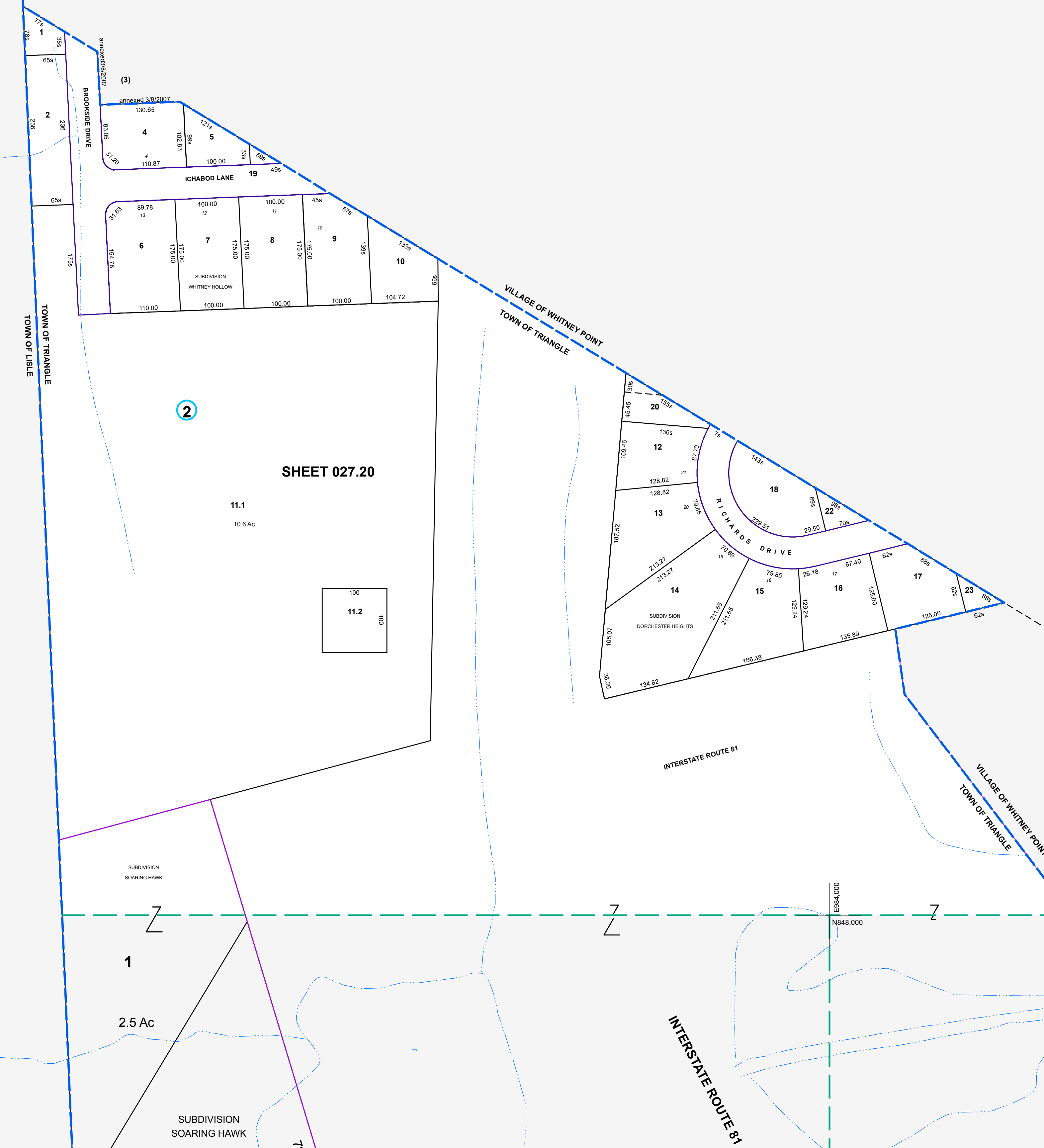


ES84.000
N850.000

ES84.000
N850.000

ES84.000
N848.000

ES84.000
N848.000



MAP REVISIONS		
DATE	MADE BY	REVISIONS
4/8/1997	DC	COMBINED 027 20-2-21 INTO 027 20-2-20
1/24/1996	TR	CORRECT VILLAGE LINE & ADD PARCELS
1/24/1996	TR	027 20-2-19 & 027 20-2-20, 027 20-2-21
1/24/1996	TR	027 20-2-22 & 027 20-2-23

SCHOOL DISTRICT AND SPECIAL DISTRICTS	
FIRE: WHITNEY POINT FIRE DISTRICT	SCHOOL: WHITNEY POINT CENTRAL SCHOOL

LEGEND	
PROPERTY LINE	———
RIGHT OF WAY LINE	———
MUNICIPAL BOUNDARY	-----
SUBDIVISION LIMIT	-----
COUNTY LINE	-----
ORIGINAL LOT LINE	-----
RAILROAD	———
STREAM	~~~~~
BLOCK LIMIT	-----
SCHOOL DISTRICT LINE	-----
FIRE DISTRICT LINE	-----
DENOTES COMMON OWNER	①
PARCEL NUMBER	10
ORIGINAL SUBD LOT NUMBER	10
TAX MAP BLOCK NUMBER	①
TAX MAP PARCEL NUMBER	08.00-1-10
CALCULATED ACREAGE	20.5 A(c)
DEED ACREAGE	20.5 A
SCALED DIMENSION (FEET)	150 (3)
DEED DIMENSION (FEET)	150
COORDINATE LOCATOR	*

1983 North American Datum
New York State Plane, Central Zone

THIS MAP WAS PRODUCED FOR TAX PURPOSES ONLY AND IS NOT TO BE REPRODUCED OR USED FOR SURVEYING OR CONVEYANCING

TOWN	027.16	WHITNEY
OF		POINT
LISLE	034.02	035.05

MAP DATE 4/15/1994

TAX MAP
TOWN OF TRIANGLE
BROOME COUNTY, NEW YORK

100 0 100 200 300

GRAPHIC SCALE - 1" = 100'

027.20