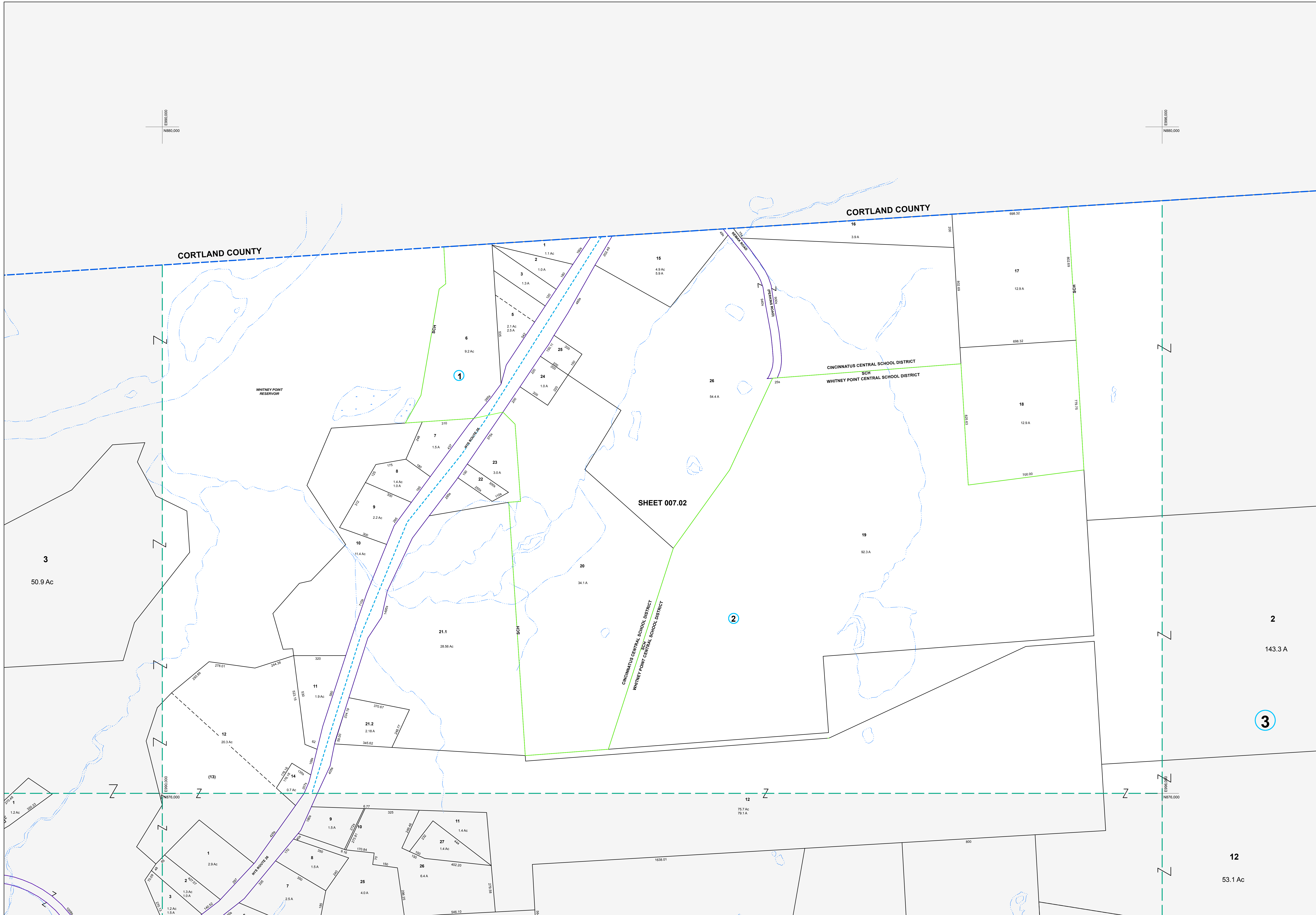


ES990,000
N880,000

ES990,000
N880,000



MAP REVISIONS		
DATE	MADE BY	REVISIONS

SCHOOL DISTRICT AND SPECIAL DISTRICTS	
FIRE: WHITNEY POINT FIRE DISTRICT	SCHOOL: CININNATUS CENTRAL SCHOOL WHITNEY POINT CENTRAL SCHOOL

LEGEND	
PROPERTY LINE	RAILROAD
RIGHT OF WAY LINE	STREAM
MUNICIPAL BOUNDARY	BLOCK LIMIT
SUBDIVISION LIMIT	SCHOOL DISTRICT LINE
COUNTY LINE	FIRE DISTRICT LINE
ORIGINAL LOT LINE	

NOTES COMMON OWNER	TAX MAP PARCEL NUMBER	08.00-1.10
PARCEL NUMBER	CALCULATED ACREAGE	20.5 A(c)
ORIGINAL SUBID NUMBER	DEED ACREAGE	20.5 A
TAX MAP BLOCK NUMBER	SCALED DIMENSION (FEET)	150 (9)
	DEED DIMENSION (FEET)	150
	COORDINATE LOCATOR	•

1983 North American Datum
New York State Plane, Central Zone

THIS MAP WAS PRODUCED FOR TAX PURPOSES ONLY AND IS NOT TO BE REPRODUCED OR USED FOR SURVEYING OR CONVEYANCING

CORTLAND COUNTY	
007.00	008.00
007.03	007.04 008.00

TAX MAP
TOWN OF TRIANGLE
BROOME COUNTY, NEW YORK

MAP DATE 4/15/1994

GRAPHIC SCALE - 1" = 200'

007.02