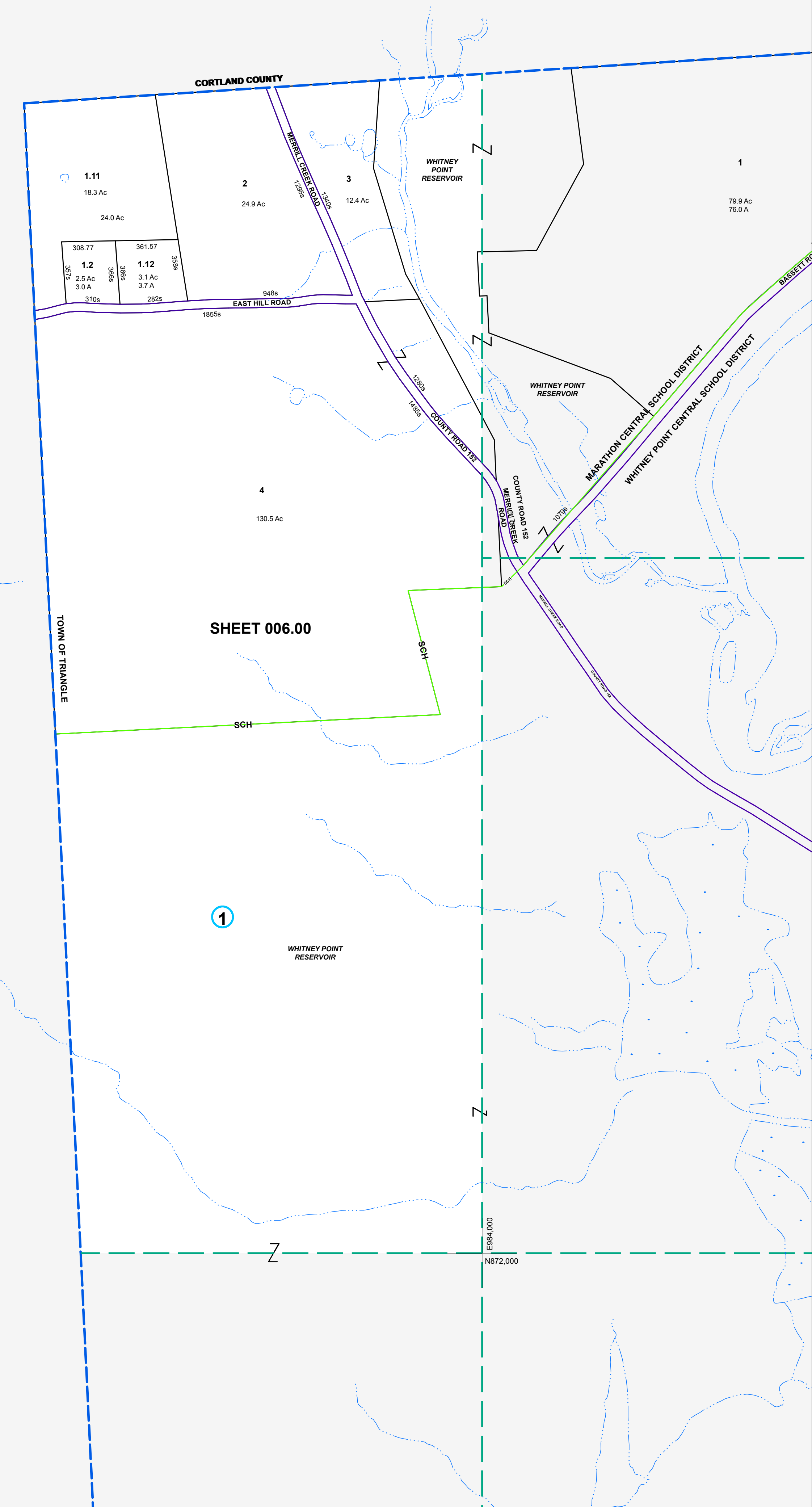


EP72.000  
N880.000

EP84.000  
N880.000



SHEET 006.00

①

EP72.000  
N872.000

EP84.000  
N872.000



MAP REVISIONS		
DATE	MADE BY	REVISIONS
6/5/2010	PSW-K	006.00-1-1.2 OUT OF 006.00-1-1.1 NOW 1.1
6/5/2010	PSW-K	006.00-1-1.12 OUT OF 006.00-1-1.1 NOW 1.11

SCHOOL DISTRICT AND SPECIAL DISTRICTS	
FIRE: WHITNEY POINT FIRE DISTRICT	SCHOOL: MARATHON CENTRAL SCHOOL
	WHITNEY POINT CENTRAL SCHOOL

LEGEND	
PROPERTY LINE	———
RIGHT OF WAY LINE	———
MUNICIPAL BOUNDARY	-----
SUBDIVISION LIMIT	-----
COUNTY LINE	-----
ORIGINAL LOT LINE	-----
RAILROAD	———
STREAM	~~~~~
BLOCK LIMIT	-----
SCHOOL DISTRICT LINE	———
FIRE DISTRICT LINE	———
DENOTES COMMON OWNER	①
PARCEL NUMBER	10
ORIGINAL SUBD LOT NUMBER	10
TAX MAP BLOCK NUMBER	①
TAX MAP PARCEL NUMBER	08.00-1-10
CALCULATED ACREAGE	20.5 A(c)
DEED ACREAGE	20.5 A
SCALED DIMENSION (FEET)	150 (3)
DEED DIMENSION (FEET)	150
COORDINATE LOCATOR	•

1983 North American Datum  
New York State Plane, Central Zone

THIS MAP WAS PRODUCED FOR TAX PURPOSES ONLY AND IS NOT TO BE REPRODUCED OR USED FOR SURVEYING OR CONVEYANCING

CORTLAND	COUNTY
TOWN OF	7.00
LISLE	7.03
013.00	1401
	1400

MAP DATE 4/15/1994

TAX MAP  
**TOWN OF TRIANGLE**  
BROOME COUNTY, NEW YORK

GRAPHIC SCALE - 1" = 400'

006.00