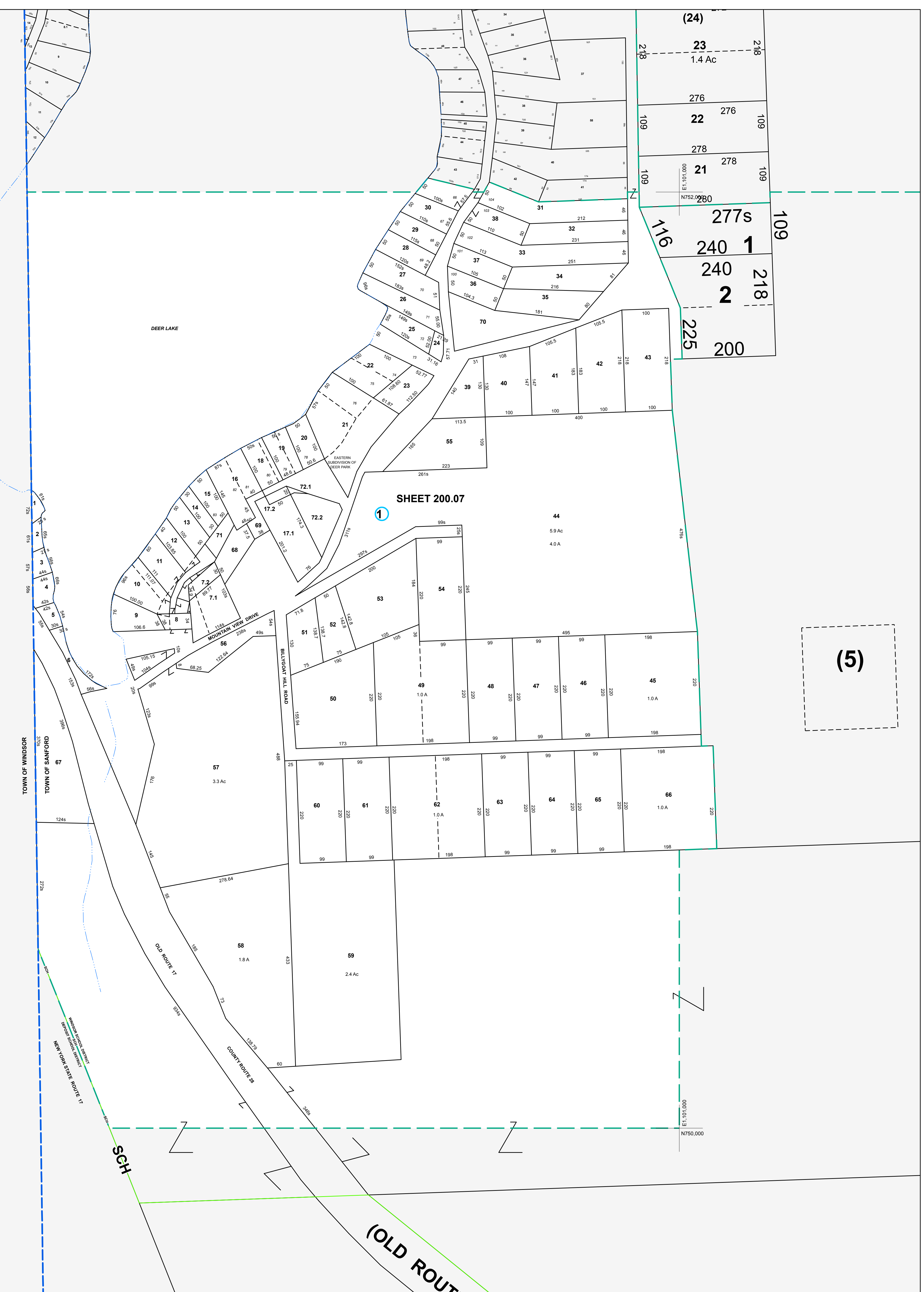


EL: 1098.000
N752.000

EL: 1098.000
N750.000



(5)



MAP REVISIONS		
DATE	MADE BY	REVISIONS
2/23/2007	DC	200.07-1-71 & 72 out of 200.00-1-14
2/28/2006	DC	200.07-1-70 out of 200.00-1-13.1
6/9/2005	DC	200.07-1-7.2 out of 7

SCHOOL DISTRICT AND SPECIAL DISTRICTS	
FIRE: DEPOSIT FIRE DISTRICT	SCHOOL: WINDSOR SCHOOL DISTRICT

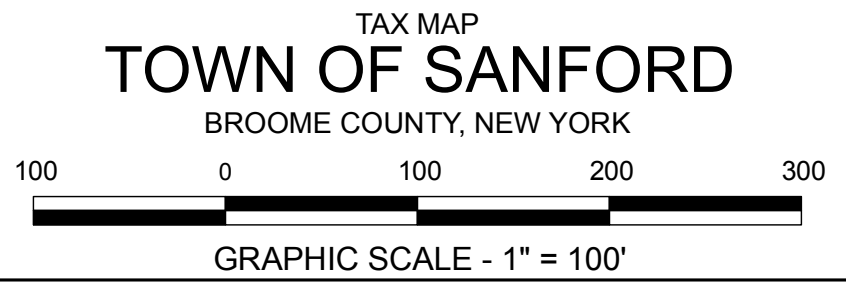
LEGEND	
PROPERTY LINE	———
RIGHT OF WAY LINE	———
MUNICIPAL BOUNDARY	-----
SUBDIVISION LIMIT	-----
COUNTY LINE	-----
ORIGINAL LOT LINE	-----
RAILROAD	———
STREAM	~~~~~
BLOCK LIMIT	-----
SCHOOL DISTRICT LINE	-----
FIRE DISTRICT LINE	-----
DENOTES COMMON OWNER	①
PARCEL NUMBER	10
ORIGINAL SUBD LOT NUMBER	10
TAX MAP BLOCK NUMBER	①
TAX MAP PARCEL NUMBER	08.00-1-10
CALCULATED ACREAGE	20.5 A(c)
DEED ACREAGE	20.5 A
SCALED DIMENSION (FEET)	150 (3)
DEED DIMENSION (FEET)	150
COORDINATE LOCATOR	*

1983 North American Datum
New York State Plane, Central Zone

THIS MAP WAS PRODUCED FOR TAX PURPOSES ONLY AND IS NOT TO BE REPRODUCED OR USED FOR SURVEYING OR CONVEYANCING

TOWN	184.82	184.04
OF	200.00	
WINDSOR	200.00	200.00

TAX MAP	
TOWN OF SANFORD	
BROOME COUNTY, NEW YORK	
MAP DATE 4/18/1995	



200.07