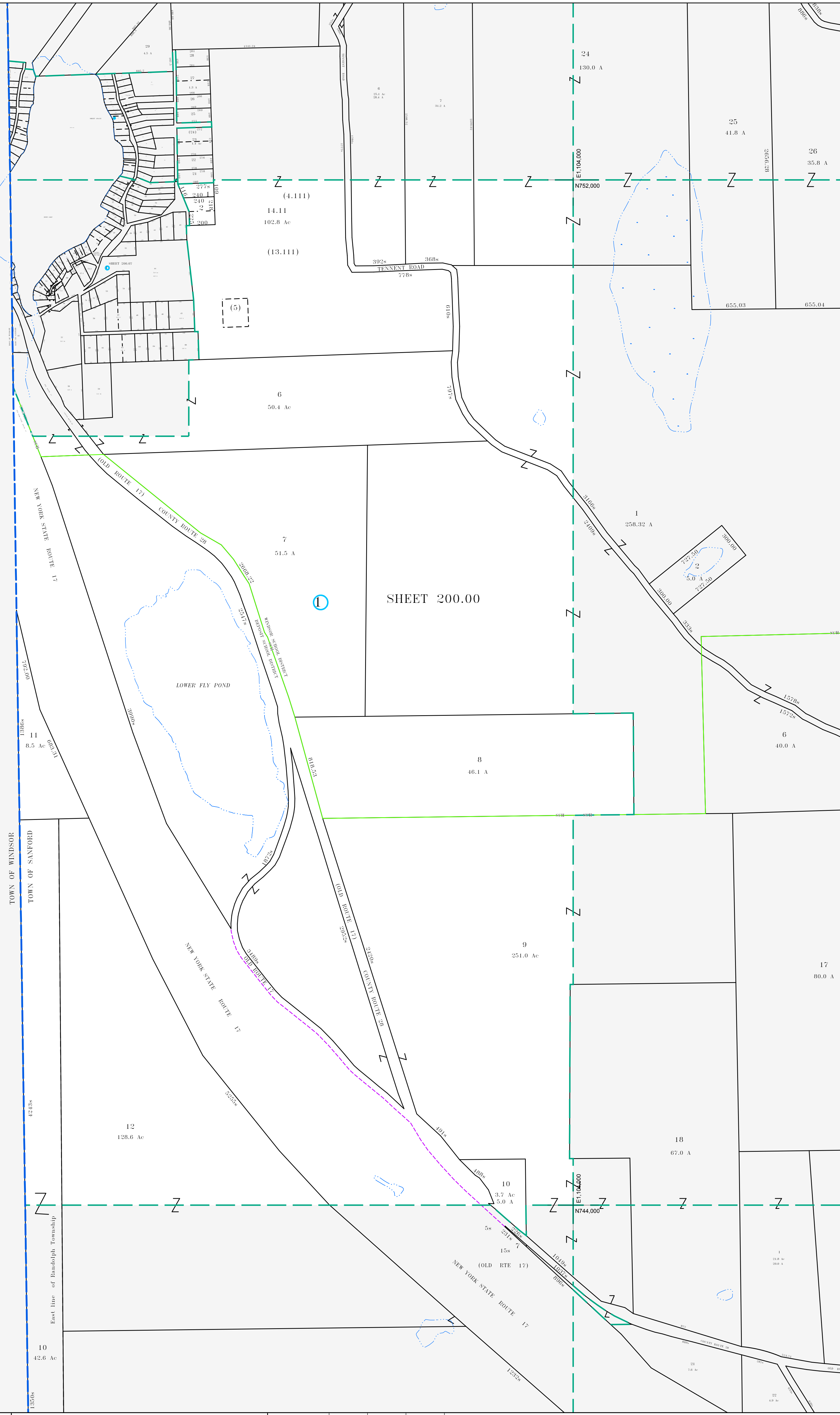


81,000,000  
N782,000

81,000,000  
N744,000



SHEET 200.00

LOWER FLY POND

TOWNSHIP OF SANDFORD  
TOWNSHIP OF SANDFORD

East line of Bantroph Township



MAP REVISIONS		
DATE	MADE BY	REVISIONS
2/18/2008	DC	200.00-1-5 of 200.00-1-14.11
2/23/2007	DC	200.07-1-71 & 72 and of 200.00-1-14
5/27/2005	DC	comb. pg 200.00-1-13 into 184.82-1-32
2/20/1998	TR	COMB. 200.00-1-3 WITH 200.00-1-2

SCHOOL DISTRICT AND SPECIAL DISTRICTS	
FIRE: DEPOSIT FIRE DISTRICT	SCHOOL: DEPOSIT SCHOOL DISTRICT
	WINDSOR SCHOOL DISTRICT

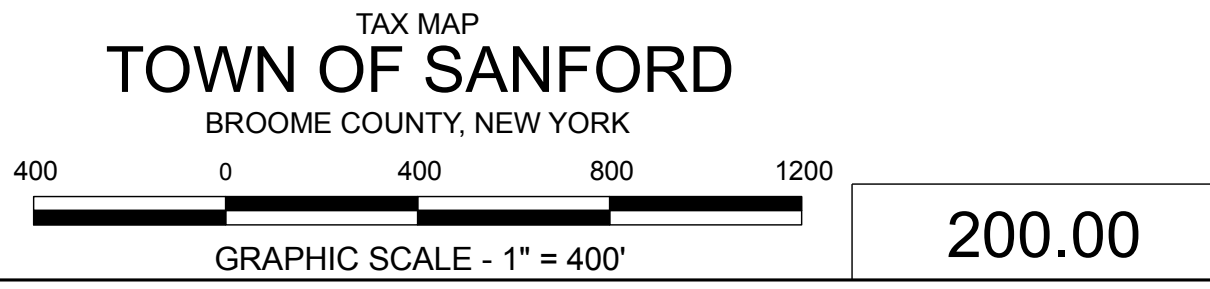
LEGEND	
PROPERTY LINE	———
RIGHT OF WAY LINE	———
MUNICIPAL BOUNDARY	-----
SUBDIVISION LIMIT	-----
COUNTY LINE	-----
ORIGINAL LOT LINE	-----
RAILROAD	———
STREAM	~~~~~
BLOCK LIMIT	-----
SCHOOL DISTRICT LINE	-----
FIRE DISTRICT LINE	-----
DENOTES COMMON OWNER	①
PARCEL NUMBER	10
ORIGINAL SUBD LOT NUMBER	10
TAX MAP BLOCK NUMBER	①
TAX MAP PARCEL NUMBER	08.00-1-10
CALCULATED ACREAGE	20.5 Ac
DEED ACREAGE	20.5 A
SCALED DIMENSION (FEET)	150.0
DEED DIMENSION (FEET)	150
COORDINATE LOCATOR	*

TOWN	
200.07	185.00
OF	201.00
WINDSOR	216.00
	217.01

1983 North American Datum  
New York State Plane, Central Zone

THIS MAP WAS PRODUCED FOR TAX PURPOSES ONLY AND IS NOT TO BE REPRODUCED OR USED FOR SURVEYING OR CONVEYANCING

TAX MAP	
BROOME COUNTY, NEW YORK	
TOWN OF SANDFORD	
MAP DATE 4/18/1995	



200.00