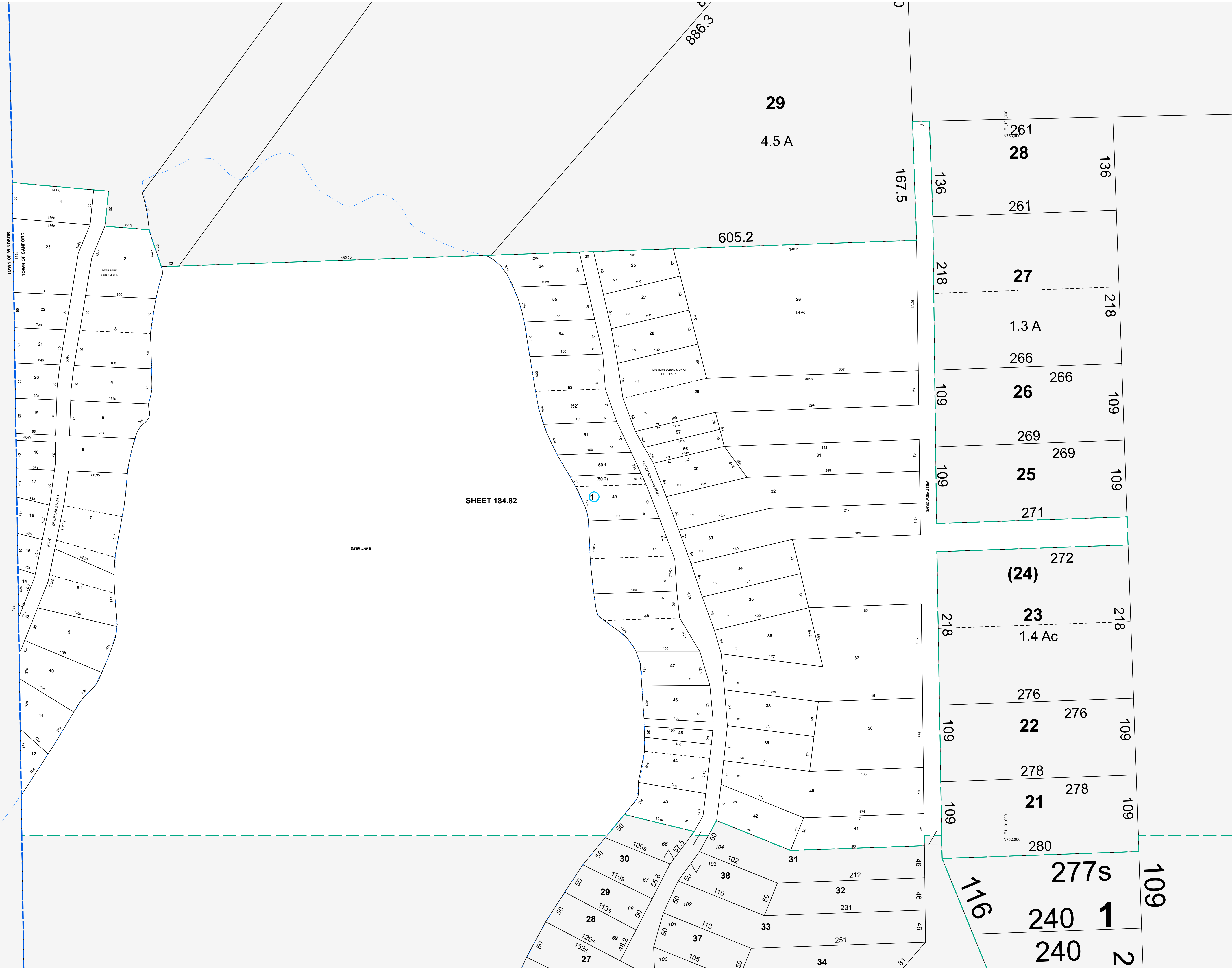


E 1,098,900
N 753,000

E 1,098,900
N 752,000

SHEET 184.82

DEER LAKE



MAP REVISIONS		
DATE	MADE BY	REVISIONS
10/31/2006	MAS	Comb 184.82-1-50.2 into 184.82-1-49
05/20/06	DC	184.82-1-56 out of 200.00-1-13.11
12/22/2005	DC	184.82-1-50.2 out of 50
3/1/2005	MAS	Comb 184.82-1-52 into 184.82-1-53
11/20/2001	ENB	split 184.82-1-57 out of 200.00-1-4.11

SCHOOL DISTRICT AND SPECIAL DISTRICTS	
FIRE: DEPOSIT FIRE DISTRICT	SCHOOL: WINDSOR SCHOOL DISTRICT

LEGEND	
PROPERTY LINE	———
RIGHT OF WAY LINE	———
MUNICIPAL BOUNDARY	———
SUBDIVISION LIMIT	———
COUNTY LINE	———
ORIGINAL LOT LINE	———
RAILROAD	———
STREAM	———
BLOCK LIMIT	———
SCHOOL DISTRICT LINE	———
FIRE DISTRICT LINE	———
DENOTES COMMON OWNER	①
PARCEL NUMBER	10
ORIGINAL SUBD LOT NUMBER	10
TAX MAP BLOCK NUMBER	①
TAX MAP PARCEL NUMBER	08.00-1-10
CALCULATED ACREAGE	20.5 A(±)
DEED ACREAGE	20.5 A
SCALED DIMENSION (FEET)	150 (±)
DEED DIMENSION (FEET)	150
COORDINATE LOCATOR	•

1983 North American Datum
New York State Plane, Central Zone

THIS MAP WAS PRODUCED FOR TAX PURPOSES ONLY AND IS NOT TO BE REPRODUCED OR USED FOR SURVEYING OR CONVEYANCING

TOWN	184.04	184.04
OF	184.04	184.04
WINDSOR	200.07	200.00

TAX MAP
TOWN OF SANFORD
BROOME COUNTY, NEW YORK

50 0 50 100 150
GRAPHIC SCALE - 1" = 50'

MAP DATE 4/18/1995

184.82