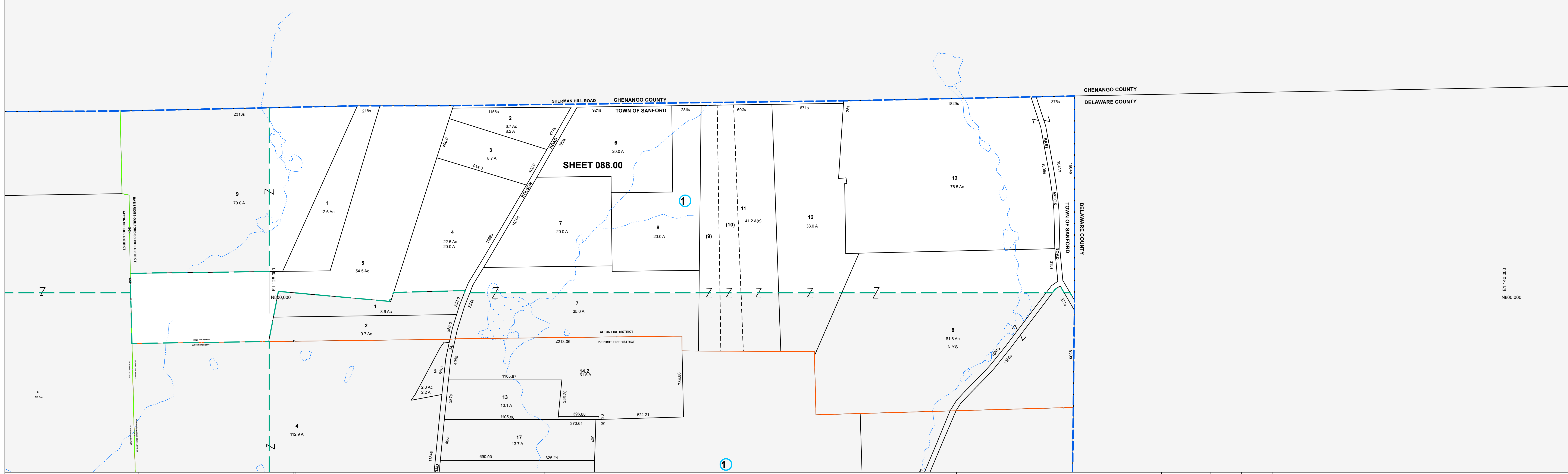


E1,128,000
N808,000

E1,140,000
N808,000



E1,140,000
N800,000



MAP REVISIONS		
DATE	MADE BY	REVISIONS
5/17/2004	MAS	Comb 088.00-1-9 & 10 into 088.00-1-11

SCHOOL DISTRICT AND SPECIAL DISTRICTS	
FIRE: AFTON FIRE DISTRICT	SCHOOL: BAINBRIDGE-GUILFORD SCHOOL DIST

LEGEND	
PROPERTY LINE	———
RIGHT OF WAY LINE	———
MUNICIPAL BOUNDARY	———
SUBDIVISION LIMIT	———
COUNTY LINE	———
ORIGINAL LOT LINE	———
RAILROAD	———
STREAM	———
BLOCK LIMIT	———
SCHOOL DISTRICT LINE	———
FIRE DISTRICT LINE	———
DENOTES COMMON OWNER	①
PARCEL NUMBER	10
ORIGINAL SUB LOT NUMBER	10
TAX MAP BLOCK NUMBER	①

TAX MAP PARCEL NUMBER	08.00-1-10
CALCULATED ACREAGE	20.5 A(c)
DEED ACREAGE	20.5 A
SCALED DIMENSION (FEET)	150 (3)
DEED DIMENSION (FEET)	150
COORDINATE LOCATOR	*

1983 North American Datum
New York State Plane, Central Zone

THIS MAP WAS PRODUCED FOR TAX PURPOSES ONLY AND IS NOT TO BE REPRODUCED OR USED FOR SURVEYING OR CONVEYANCING

CHENANGO	COUNTY
087.00	DELAWARE
104.02	105.00
COUNTY	COUNTY

TAX MAP
TOWN OF SANFORD
BROOME COUNTY, NEW YORK

MAP DATE 4/18/1995

GRAPHIC SCALE - 1" = 400'

088.00