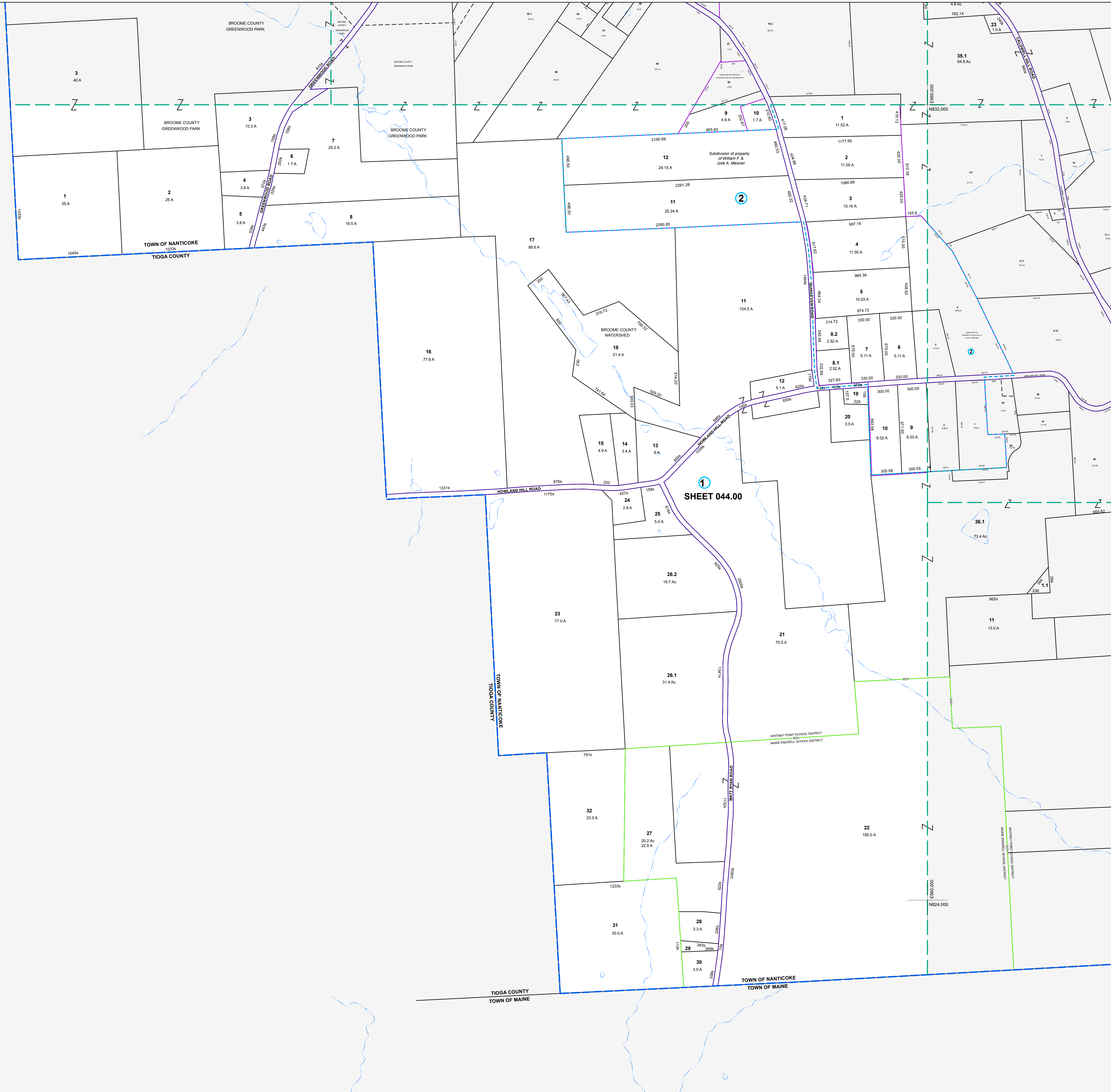


E 848,000
N 832,000

E 848,000
N 824,000



MAP REVISIONS		
DATE	MADE BY	REVISIONS
3/2/2000	DC	044.00-1-26.2 OUT OF 044.00-1-26

SCHOOL DISTRICT AND SPECIAL DISTRICTS	
FIRE: NANTICOKE FIRE DISTRICT	SCHOOL: WHITNEY POINT SCHOOL DISTRICT MAINE ENDWELL SCHOOL DISTRICT

LEGEND	
PROPERTY LINE	RAILROAD
RIGHT OF WAY LINE	STREAM
MUNICIPAL BOUNDARY	BLOCK LIMIT
SUBDIVISION LIMIT	SCHOOL DISTRICT LINE
COUNTY LINE	FIRE DISTRICT LINE
ORIGINAL LOT LINE	

LEGEND	
NOTES COMMON OWNER	TAX MAP PARCEL NUMBER
PARCEL NUMBER	CALCULATED ACREAGE
ORIGINAL SUBD LOT NUMBER	DEED ACREAGE
TAX MAP BLOCK NUMBER	SCALED DIMENSION (FEET)
	DEED DIMENSION (FEET)
	COORDINATE LOCATOR

1983 North American Datum
New York State Plane, Central Zone

THIS MAP WAS PRODUCED FOR TAX PURPOSES ONLY AND IS NOT TO BE REPRODUCED OR USED FOR SURVEYING OR CONVEYANCING

038.00	038.04	039.00
TIOGA		4501 4500
TOWN	OF	MAINE

TAX MAP
TOWN OF NANTICOKE
BROOME COUNTY, NEW YORK

MAP DATE: 5/25/1995

GRAPHIC SCALE - 1" = 400'

400 0 400 800 1200

044.00