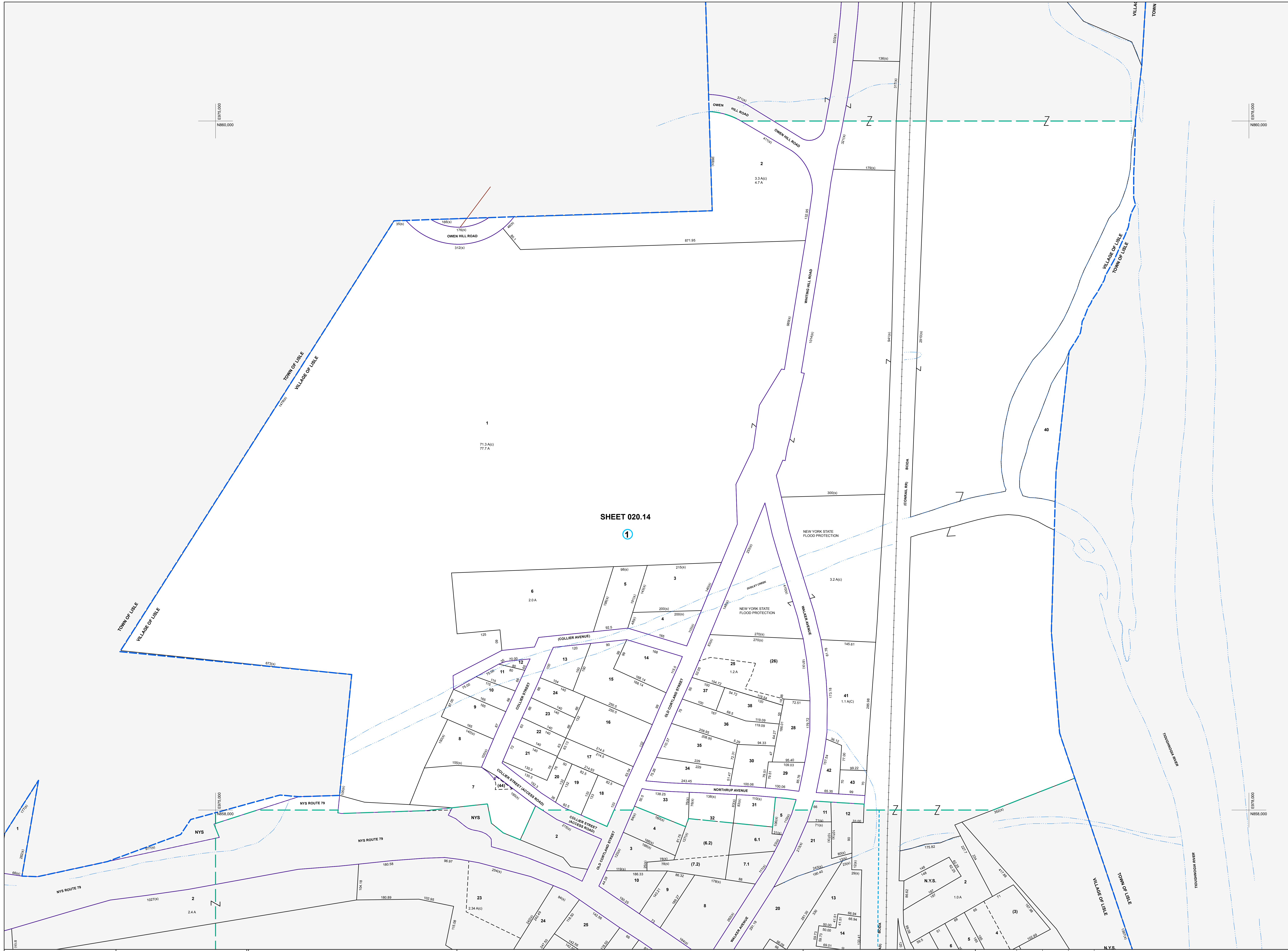


E 875,000
N 860,000

E 875,000
N 860,000

SHEET 020.14

①



MAP REVISIONS		
DATE	MADE BY	REVISIONS
6/21/2008	MAS	Comb 020.18-1.6, 2.5 & 7.2 into 020.14-1-32
3/1/2004	DC	020.14-1.48 of 020.14-1.7
11/21/2003	MAS	Comb 020.14-1.25 into 020.14-1.26

SCHOOL DISTRICT AND SPECIAL DISTRICTS	
FIRE: KILLAWOGUS FIRE DISTRICT	SCHOOL: WHITNEY POINT CENT SCHOOL

LEGEND	
PROPERTY LINE	RAILROAD
RIGHT OF WAY LINE	STREAM
MUNICIPAL BOUNDARY	BLOCK LIMIT
SUBDIVISION LIMIT	SCHOOL DISTRICT LINE
COUNTY LINE	FIRE DISTRICT LINE
ORIGINAL LOT LINE	

DENOTES COMMON OWNER	
PARCEL NUMBER	10
ORIGINAL SUBID LOT NUMBER	10
TAX MAP BLOCK NUMBER	①

1983 North American Datum New York State Plane, Central Zone	
TAX MAP PARCEL NUMBER	08.00-1.10
CALCULATED ACREAGE	20.5 A(c)
DEED ACREAGE	20.5 A
SCALED DIMENSION (FEET)	150 (8)
DEED DIMENSION (FEET)	150
COORDINATE LOCATOR	*

LISLE	020.10	LISLE
020.13		TOWN OF
020.17	020.18	LISLE

TAX MAP
VILLAGE OF LISLE
BROOME COUNTY, NEW YORK

MAP DATE 3/24/1995

GRAPHIC SCALE - 1" = 100'

020.14