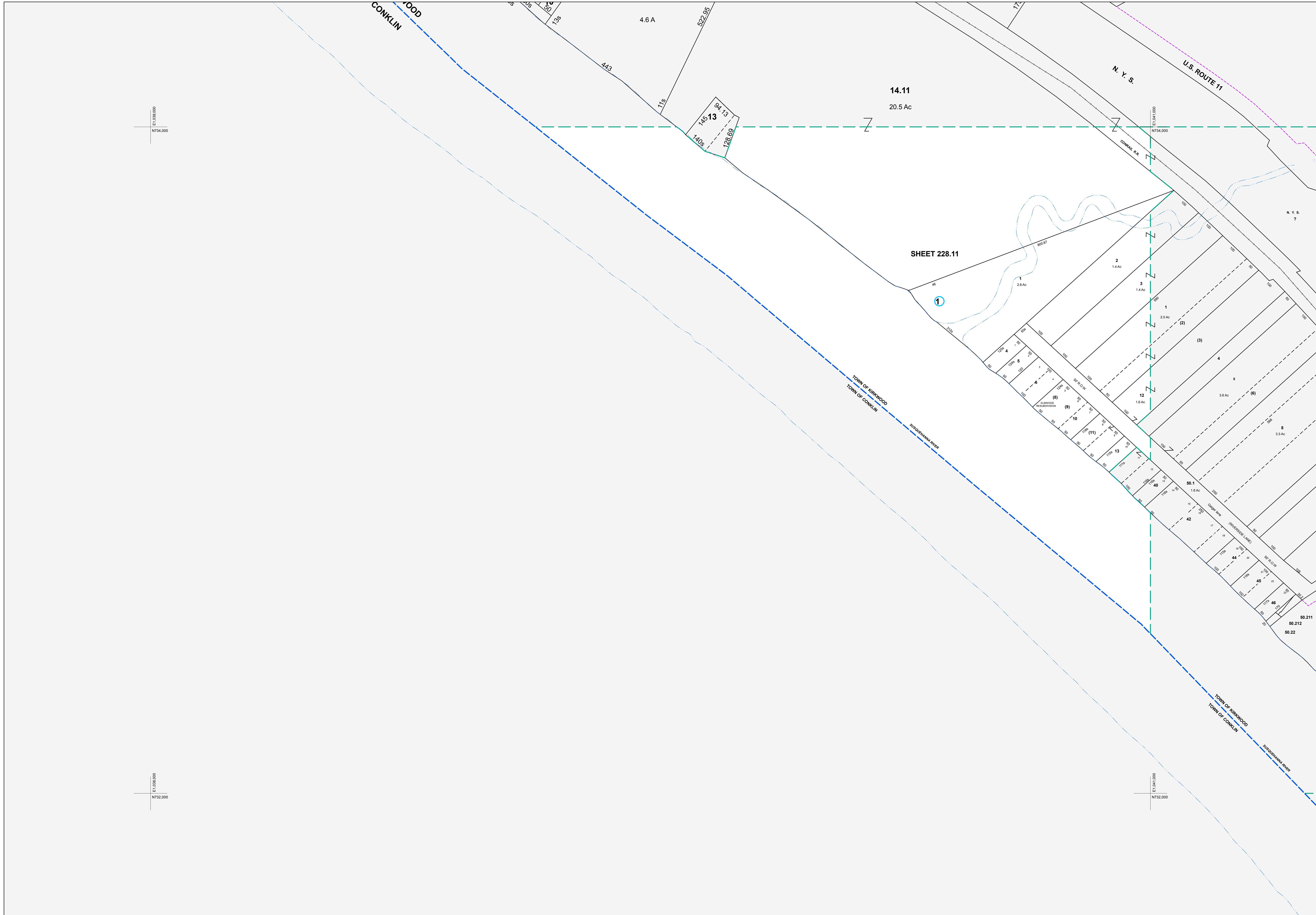


E1,038,000
N734,000

E1,038,000
N732,000

E1,041,000
N732,000



MAP REVISIONS		
DATE	MADE BY	REVISIONS
2/22/2007	MAS	Comb 228.11-1-8 & 9 into 228.11-1-10
8/1/2002	ENB	comb 228.11-1-11, 228.12-1-3 into 228.11-1-12
2/10/1998	TR	comb. 228.11-1-14, 15 with 228.12-1-5

SCHOOL DISTRICT AND SPECIAL DISTRICTS	
FIRE: KIRKWOOD FIRE DISTRICT	SCHOOL: SUSQUEHANNA VALLEY SCHOOL DISTRICT

LEGEND	
PROPERTY LINE	———
RIGHT OF WAY LINE	———
MUNICIPAL BOUNDARY	-----
SUBDIVISION LIMIT	-----
COUNTY LINE	-----
ORIGINAL LOT LINE	-----
RAILROAD	———
STREAM	~~~~~
BLOCK LIMIT	-----
SCHOOL DISTRICT LINE	———
FIRE DISTRICT LINE	———
DENOTES COMMON OWNER	①
PARCEL NUMBER	10
ORIGINAL SUBD LOT NUMBER	10
TAX MAP BLOCK NUMBER	①
TAX MAP PARCEL NUMBER	08.00-1-10
CALCULATED ACREAGE	20.5 Ac(2)
DEED ACREAGE	20.5 A
SCALED DIMENSION (FEET)	150 (3)
DEED DIMENSION (FEET)	150
COORDINATE LOCATOR	*

1983 North American Datum
New York State Plane, Central Zone

THIS MAP WAS PRODUCED FOR TAX PURPOSES ONLY AND IS NOT TO BE REPRODUCED OR USED FOR SURVEYING OR CONVEYANCING

211.18	211.00	212.00
TOWN OF	229.01	
CONKLIN	228.11	229.01

MAP DATE: 6/8/1995

TOWN OF KIRKWOOD
BROOME COUNTY, NEW YORK

GRAPHIC SCALE - 1" = 100'

228.11