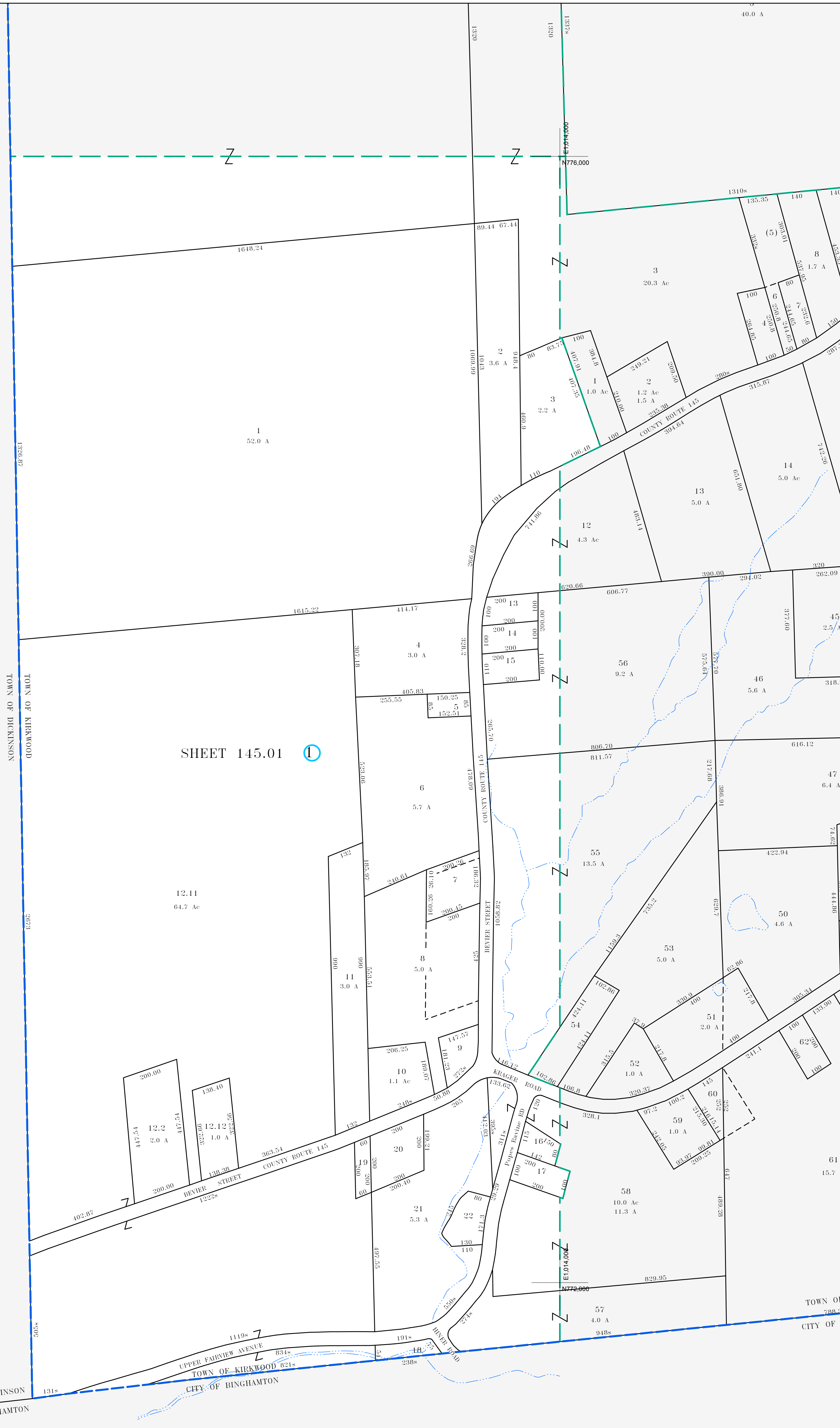


E1048.000
N776.000

E1048.000
N772.000



MAP REVISIONS		
DATE	MADE BY	REVISIONS
8/28/2003	DC	145.01-1-12.12 out of 145.01-1-12.1
3/30/2000	DC	145.01-1-12.2 OUT OF 145.01-1-12

SCHOOL DISTRICT AND SPECIAL DISTRICTS	
FIRE: FIVE MILE POINT FIRE DISTRICT	SCHOOL: CHENANGO VALLEY SCHOOL DISTRICT

LEGEND	
PROPERTY LINE	———
RIGHT OF WAY LINE	———
MUNICIPAL BOUNDARY	———
SUBDIVISION LIMIT	———
COUNTY LINE	———
ORIGINAL LOT LINE	———
RAILROAD	———
STREAM	———
BLOCK LIMIT	———
SCHOOL DISTRICT LINE	———
FIRE DISTRICT LINE	———
DENOTES COMMON OWNER	①
PARCEL NUMBER	10
ORIGINAL SUBLOT NUMBER	10
TAX MAP BLOCK NUMBER	①
TAX MAP PARCEL NUMBER	08.00-1-10
CALCULATED ACREAGE	20.5 A(c)
DEED ACREAGE	20.5 A
SCALED DIMENSION (FEET)	150 (9)
DEED DIMENSION (FEET)	150
COORDINATE LOCATOR	*

1983 North American Datum
New York State Plane, Central Zone

THIS MAP WAS PRODUCED FOR TAX PURPOSES ONLY AND IS NOT TO BE REPRODUCED OR USED FOR SURVEYING OR CONVEYANCING

TOWN OF	129.03	129.04
DICKINSON	145.02	
CITY OF	BINGHAMTON	

TOWN OF	129.03	129.04
DICKINSON	145.02	
CITY OF	BINGHAMTON	

TAX MAP
TOWN OF KIRKWOOD
BROOME COUNTY, NEW YORK

MAP DATE: 6/8/1995

GRAPHIC SCALE - 1" = 200'

145.01