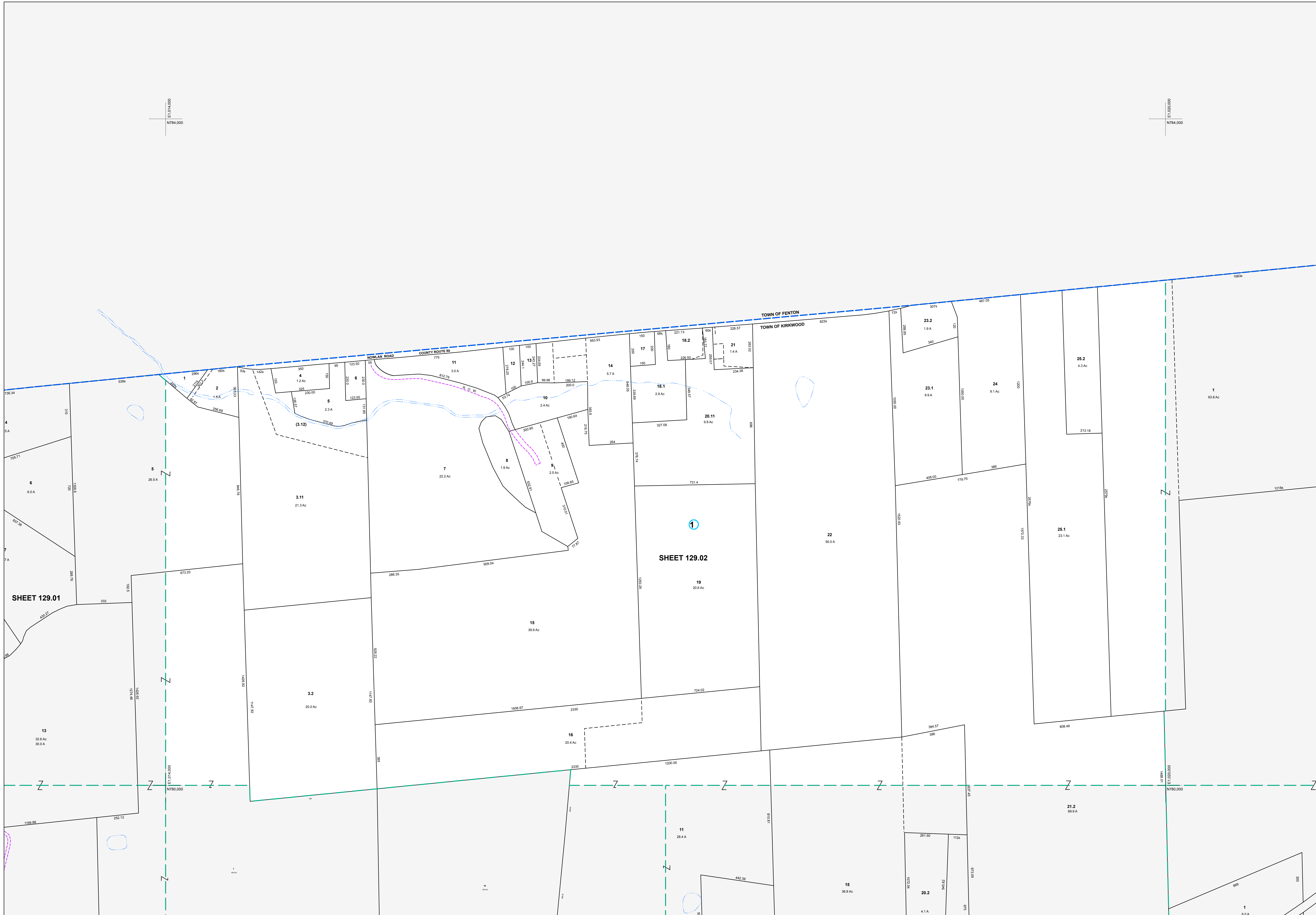


E1,014,000
N784,000

E1,020,000
N784,000



| MAP REVISIONS | | |
|---------------|---------|-------------------------------------|
| DATE | MADE BY | REVISIONS |
| 2/14/2008 | DC | 129.02-1-3.112 out of 3.11 |
| 3/1/2004 | DC | Comb. 129.02-1-20 into 129.02-1-6.2 |
| 3/1/2004 | DC | 129.02-1-18.2 out of 18 |
| 12/15/2003 | DC | 129.02-1-23.2 out of 129.02-1-23 |
| 3/28/2003 | DC | 129.02-1-3.12 out of 129.02-1-3.1 |

| SCHOOL DISTRICT AND SPECIAL DISTRICTS | |
|---------------------------------------|---|
| FIRE: FIVE MILE POINT FIRE DISTRICT | SCHOOL: CHENANGO VALLEY SCHOOL DISTRICT |

| LEGEND | |
|--------------------|----------------------|
| PROPERTY LINE | RAILROAD |
| RIGHT OF WAY LINE | STREAM |
| MUNICIPAL BOUNDARY | BLOCK LIMIT |
| SUBDIVISION LIMIT | SCHOOL DISTRICT LINE |
| COUNTY LINE | FIRE DISTRICT LINE |
| ORIGINAL LOT LINE | |

| DENOTES COMMON OWNER | |
|--------------------------|----|
| PARCEL NUMBER | 10 |
| ORIGINAL SUBD LOT NUMBER | 10 |
| TAX MAP BLOCK NUMBER | 1 |

| TAX MAP PARCEL NUMBER | |
|-----------------------|---------|
| 08.00-1-10 | 20.5 Ac |
| 20.5 Ac | 20.5 Ac |
| 190.9 | 190.9 |
| 150 | 150 |
| COORDINATE LOCATOR | • |

| 1983 North American Datum New York State Plane, Central Zone | | |
|---|--------|--------|
| TOWN | OF | FENTON |
| 129.01 | | 130.01 |
| 129.03 | 129.15 | 130.64 |

TAX MAP
TOWN OF KIRKWOOD
BROOME COUNTY, NEW YORK

MAP DATE: 6/8/1995

GRAPHIC SCALE - 1" = 200'

129.02