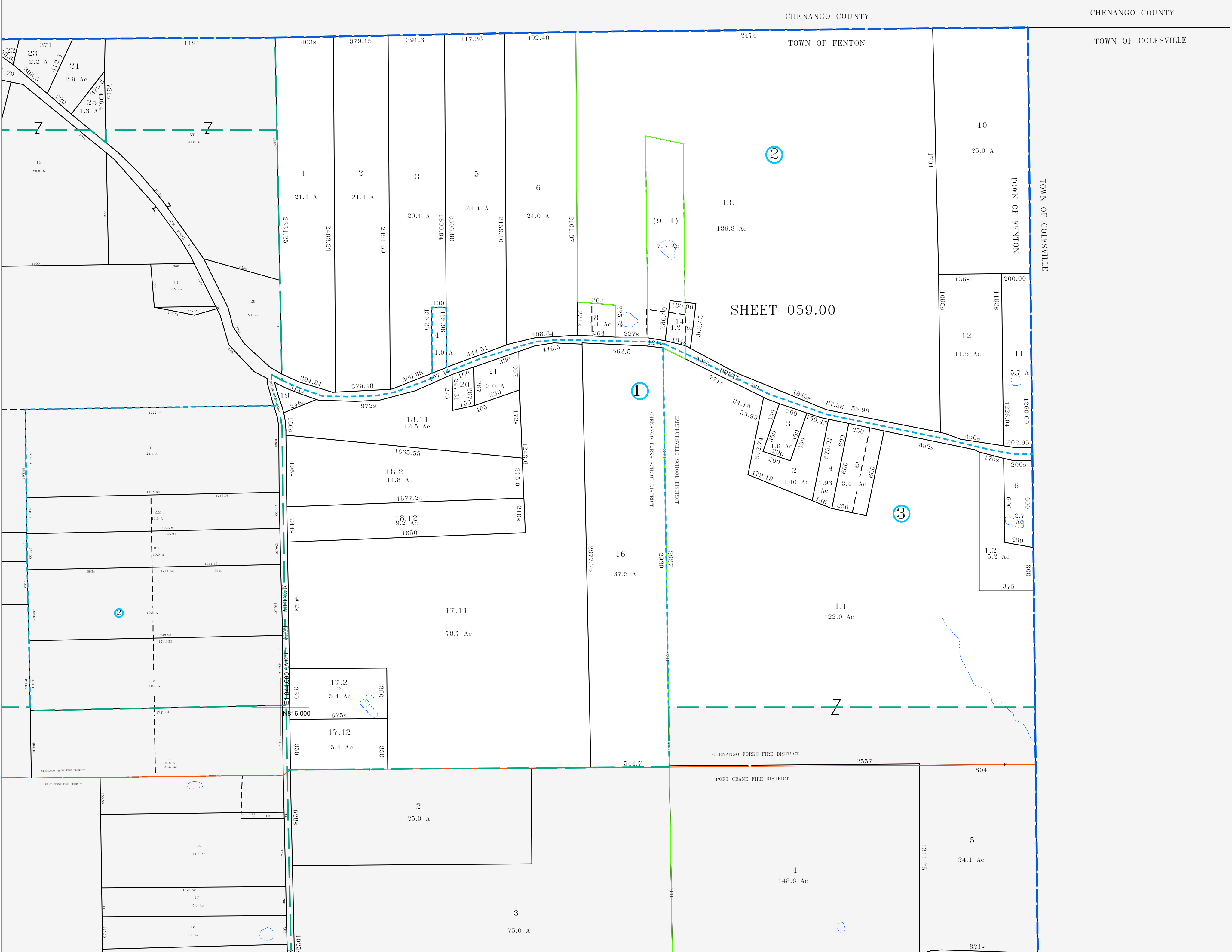


E1104600
N824.000

E1105600
N824.000



E1105600
N816.000



MAP REVISIONS	
DATE	MADE BY
12/28/2010	DMC
2/18/2004	MAS
9/23/2002	DMC
8/14/2002	DMC
8/21/1998	DMC

SCHOOL DISTRICT AND SPECIAL DISTRICTS	
FIRE	CHENANGO FORKS FIRE DISTRICT
FIRE	PORT CRANE FIRE DISTRICT
SCHOOL	CHENANGO FORKS SCHOOL DISTRICT
SCHOOL	HARPURSVILLE SCHOOL DISTRICT

LEGEND	
PROPERTY LINE	———
RIGHT OF WAY LINE	———
MUNICIPAL BOUNDARY	———
SUBDIVISION LIMIT	———
COUNTY LINE	———
ORIGINAL LOT LINE	———
RAILROAD	———
STREAM	———
BLOCK LIMIT	———
SCHOOL DISTRICT LINE	———
FIRE DISTRICT LINE	———
DENOTES COMMON OWNER	①
PARCEL NUMBER	10
ORIGINAL SUBD LOT NUMBER	10
TAX MAP BLOCK NUMBER	①

TAX MAP PARCEL NUMBER	058.00-1-10
CALCULATED ACREAGE	20.5 A
SCALED ACREAGE	20.5 A
DEED DIMENSION (FEET)	150.00
DEED DIMENSION (FEET)	150
COORDINATE LOCATOR	•

1983 North American Datum
New York State Plane, Central Zone

THIS MAP WAS PRODUCED FOR TAX PURPOSES ONLY AND IS NOT TO BE REPRODUCED OR USED FOR SURVEYING OR CONVEYANCING

058.00	CHENANGO	COUNTY
058.04		TOWN OF
069.02	070.00	COLESVILLE

TAX MAP
TOWN OF FENTON
BROOME COUNTY, NEW YORK

MAP DATE 3/1/1995

GRAPHIC SCALE - 1" = 400'

059.00