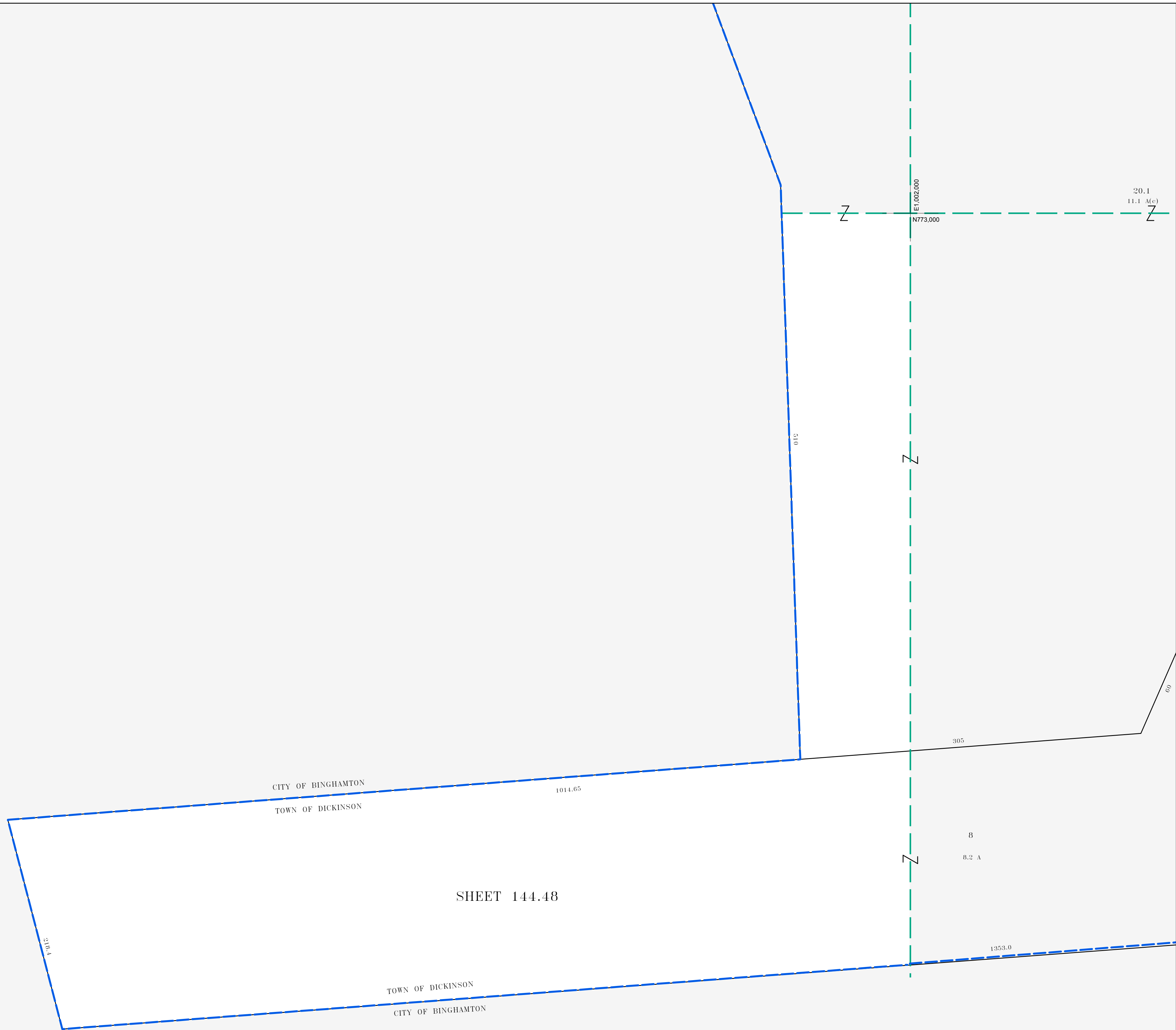


E1,000,000
N773,000

E1,000,000
N773,000
20.1
11.1 (Ac)



E1,000,000
N772,000

E1,000,000
N772,000



MAP REVISIONS		
DATE	MADE BY	REVISIONS

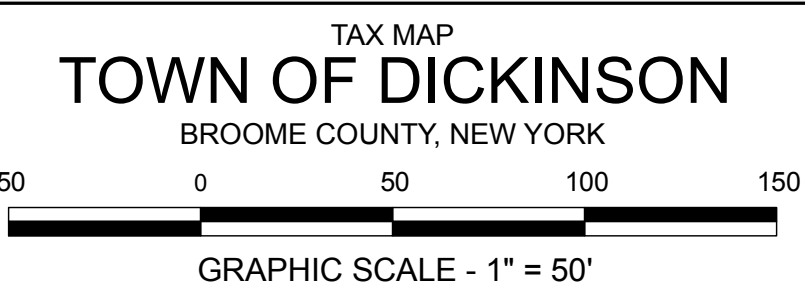
SCHOOL DISTRICT AND SPECIAL DISTRICTS	
FIRE: CHENANGO FIRE DISTRICT	SCHOOL: BINGHAMTON CITY SCHOOL DISTRICT

LEGEND	
PROPERTY LINE	———
RIGHT OF WAY LINE	———
MUNICIPAL BOUNDARY	-----
SUBDIVISION LIMIT	-----
COUNTY LINE	-----
ORIGINAL LOT LINE	-----
RAILROAD	——+——
STREAM	~~~~~
BLOCK LIMIT	-----
SCHOOL DISTRICT LINE	---SCH---
FIRE DISTRICT LINE	---F---
DENOTES COMMON OWNER	①
PARCEL NUMBER	10
ORIGINAL SUBD LOT NUMBER	10
TAX MAP BLOCK NUMBER	①
TAX MAP PARCEL NUMBER	08.00-1-10
CALCULATED ACREAGE	20.5 A(c)
DEED ACREAGE	20.5 A
SCALED DIMENSION (FEET)	150 (5)
DEED DIMENSION (FEET)	150
COORDINATE LOCATOR	•

1983 North American Datum New York State Plane, Central Zone
THIS MAP WAS PRODUCED FOR TAX PURPOSES ONLY AND IS NOT TO BE REPRODUCED OR USED FOR SURVEYING OR CONVEYANCING

CITY	144.40	144.41
OF		144.49
BINGHAMTON	CITY OF	BINGHAMTON

TAX MAP	
TOWN OF DICKINSON	
BROOME COUNTY, NEW YORK	
MAP DATE	12/7/1994



144.48