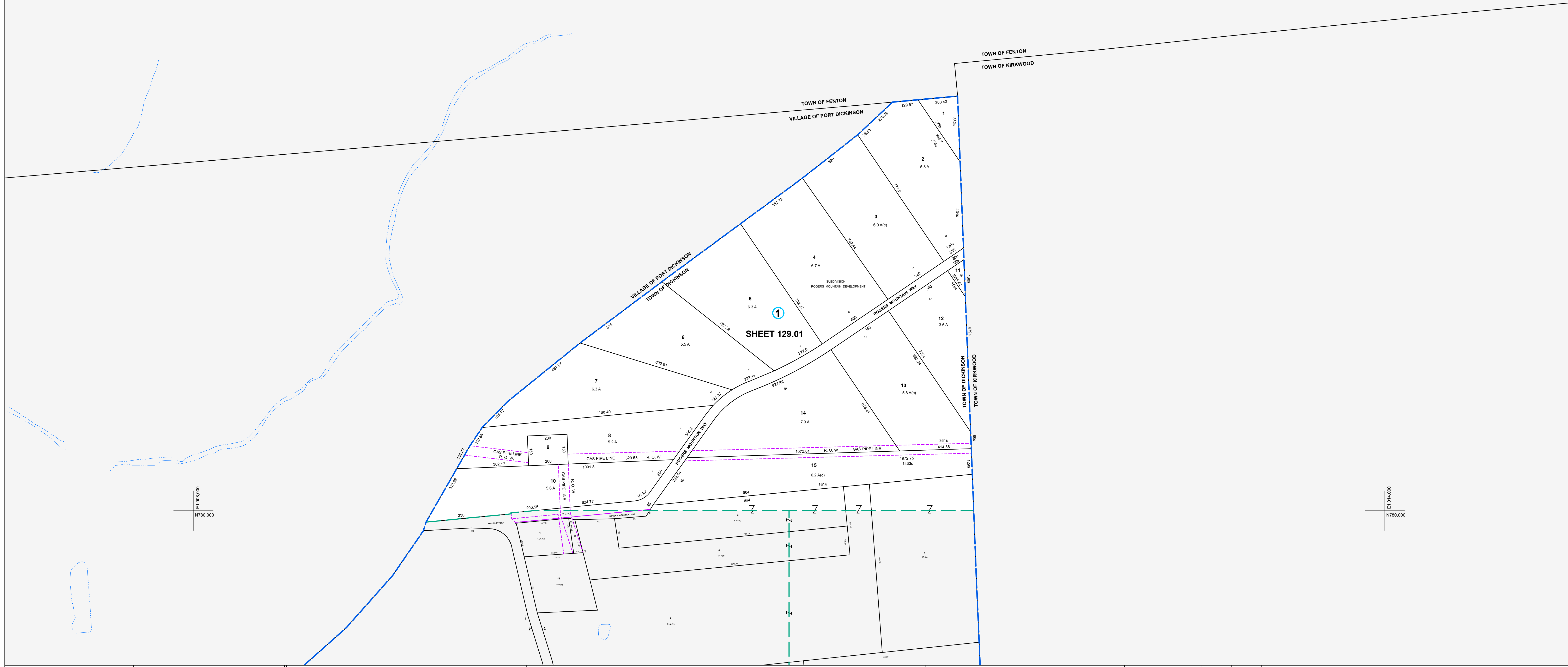


E1788,000  
N784,000

E1794,000  
N784,000

E1788,000  
N780,000

E1794,000  
N780,000



MAP REVISIONS		
DATE	MADE BY	REVISIONS

SCHOOL DISTRICT AND SPECIAL DISTRICTS	
FIRE: PORT DICKINSON FIRE DISTRICT	SCHOOL: CHENANGO VALLEY SCHOOL DISTRICT

LEGEND	
PROPERTY LINE	———
RIGHT OF WAY LINE	———
MUNICIPAL BOUNDARY	———
SUBDIVISION LIMIT	———
COUNTY LINE	———
ORIGINAL LOT LINE	———
RAILROAD	———
STREAM	———
BLOCK LIMIT	———
SCHOOL DISTRICT LINE	———
FIRE DISTRICT LINE	———
DENOTES COMMON OWNER	①
PARCEL NUMBER	10
ORIGINAL SUBLOT NUMBER	10
TAX MAP BLOCK NUMBER	①

TAX MAP PARCEL NUMBER	08.00-1.10
CALCULATED ACREAGE	20.5 A(c)
DEED ACREAGE	20.5 A
SCALED DIMENSION (FEET)	150 (3)
DEED DIMENSION (FEET)	150
COORDINATE LOCATOR	*

1983 North American Datum  
New York State Plane, Central Zone

THIS MAP WAS PRODUCED FOR TAX PURPOSES ONLY AND IS NOT TO BE REPRODUCED OR USED FOR SURVEYING OR CONVEYANCING

TOWN	OF	FENTON
VILLAGE		TOWN OF
PORT DICK	129.13	KIRKWOOD

TAX MAP  
**TOWN OF DICKINSON**  
BROOME COUNTY, NEW YORK

MAP DATE: 12/7/1994

GRAPHIC SCALE - 1" = 200'

129.01