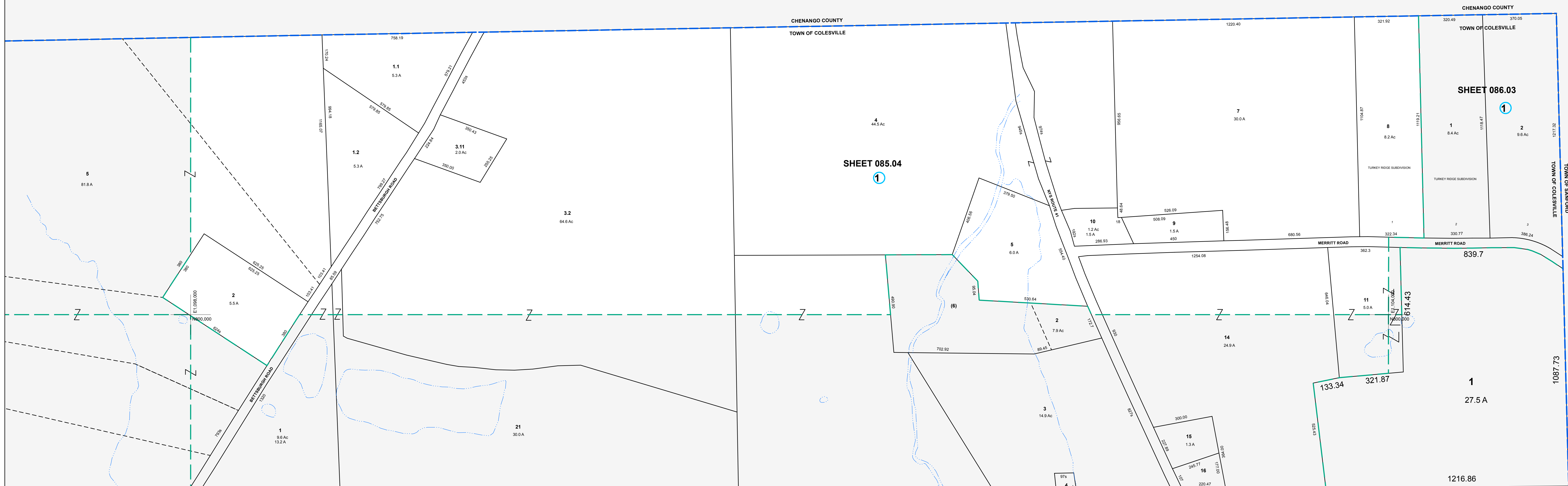


E 1080.00  
N 804.000

E 1104.000  
N 804.000



MAP REVISIONS		
DATE	MADE BY	REVISIONS
5/21/2007	MAS	Comb 085.04-1-6 into 102.02-1-2
1/21/1998	DC	102.02-1-21 OUT OF 085.04-1-3.1
1/21/1998	DC	085.04-1-3.2 OUT OF 085.04-1-3

SCHOOL DISTRICT AND SPECIAL DISTRICTS	
FIRE: AFTON FIRE DISTRICT	SCHOOL: AFTON SCHOOL DISTRICT

LEGEND	
PROPERTY LINE	———
RIGHT OF WAY LINE	———
MUNICIPAL BOUNDARY	-----
SUBDIVISION LIMIT	-----
COUNTY LINE	-----
ORIGINAL LOT LINE	-----
RAILROAD	———
STREAM	~~~~~
BLOCK LIMIT	-----
SCHOOL DISTRICT LINE	-----
FIRE DISTRICT LINE	-----
DENOTES COMMON OWNER	①
PARCEL NUMBER	10
ORIGINAL SUB LOT NUMBER	10
TAX MAP BLOCK NUMBER	①
TAX MAP PARCEL NUMBER	08.00-1-10
CALCULATED ACREAGE	20.5 A(c)
DEED ACREAGE	20.5 A
SCALED DIMENSION (FEET)	150 (9)
DEED DIMENSION (FEET)	150
COORDINATE LOCATOR	*

1983 North American Datum  
New York State Plane, Central Zone

THIS MAP WAS PRODUCED FOR TAX PURPOSES ONLY AND IS NOT TO BE REPRODUCED OR USED FOR SURVEYING OR CONVEYANCING

TOWN OF COLESVILLE	
CHENANGO	COUNTY
085.03	086.03
102.01	102.02
103.00	103.00

TAX MAP  
**TOWN OF COLESVILLE**  
BROOME COUNTY, NEW YORK

MAP DATE 2/7/1995

GRAPHIC SCALE - 1" = 200'

0 200 400 600

085.04