

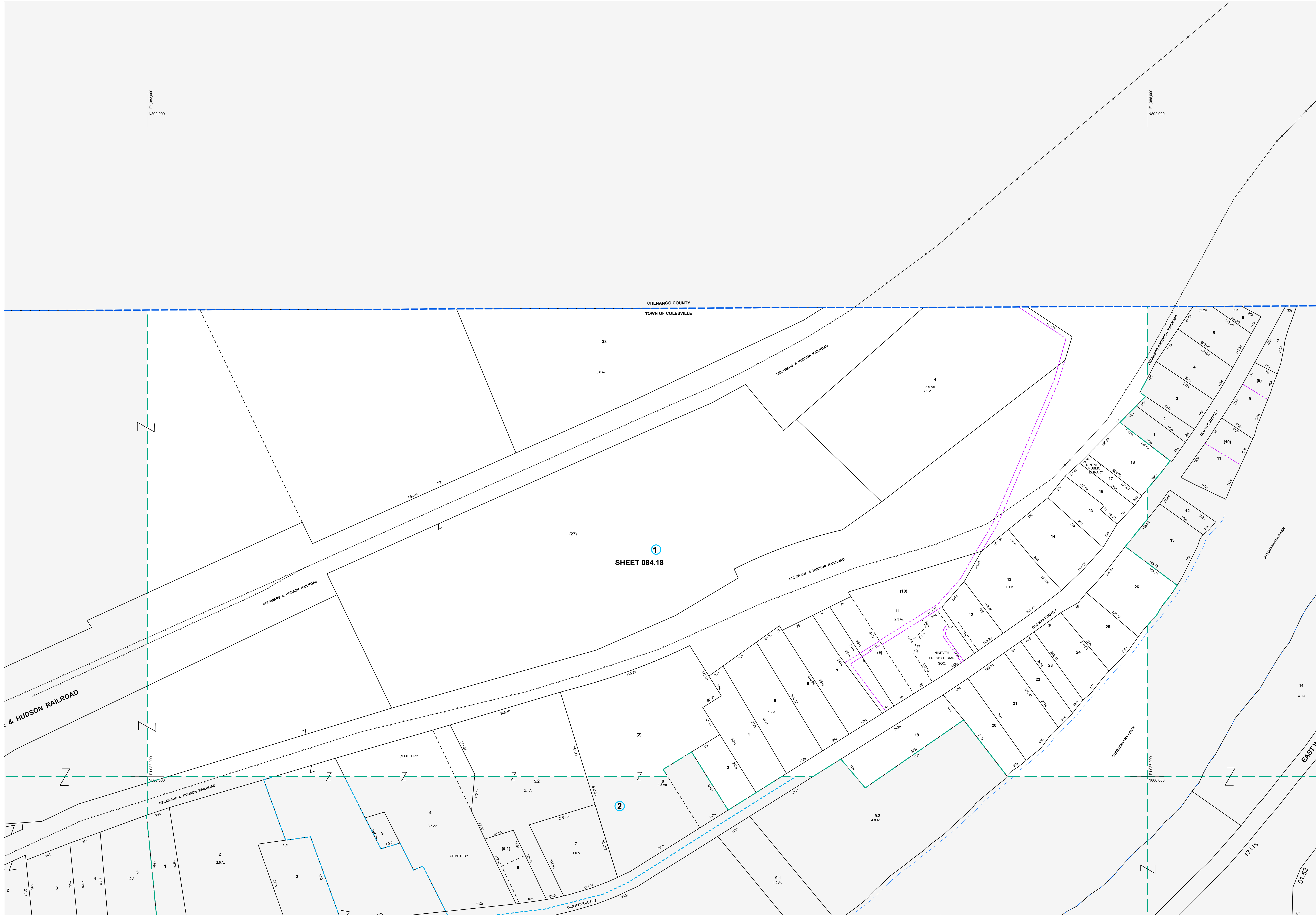
E 10930.000
N 802.000

E 10930.000
N 802.000

CHENANGO COUNTY
TOWN OF COLESVILLE

1
SHEET 084.18

2



MAP REVISIONS		
DATE	MADE BY	REVISIONS
2/24/2003	DC	084.18-1-27:01 084.03-1-4
2/14/2002	ENB	COMBINE 084.18-1-2 AND 101.06-3-8
2/14/2001	ENB	COMBINE 084.18-1-9 AND 084.18-1-10 INTO
2/14/2001	ENB	084.18-1-11
10/23/1998	TR	084.18-1-27 OUT OF 101.06-1-5.1.1 & Z

SCHOOL DISTRICT AND SPECIAL DISTRICTS	
FIRE: HARPURSVILLE FIRE DISTRICT	SCHOOL: HARPURSVILLE SCHOOL DISTRICT

LEGEND	
PROPERTY LINE	———
RIGHT OF WAY LINE	———
MUNICIPAL BOUNDARY	———
SUBDIVISION LIMIT	———
COUNTY LINE	———
ORIGINAL LOT LINE	———
RAILROAD	———
STREAM	———
BLOCK LIMIT	———
SCHOOL DISTRICT LINE	———
FIRE DISTRICT LINE	———
DENOTES COMMON OWNER	①
PARCEL NUMBER	10
ORIGINAL SUB LOT NUMBER	10
TAX MAP BLOCK NUMBER	①
TAX MAP PARCEL NUMBER	08.00-1-10
CALCULATED ACREAGE	20.5 A(c)
DEED ACREAGE	20.5 A
SCALED DIMENSION (FEET)	150 (9)
DEED DIMENSION (FEET)	150
COORDINATE LOCATOR	*

1983 North American Datum
New York State Plane, Central Zone

THIS MAP WAS PRODUCED FOR TAX PURPOSES ONLY AND IS NOT TO BE REPRODUCED OR USED FOR SURVEYING OR CONVEYANCING

CHENANGO COUNTY	
084.03	084.19
101.05	101.06 101.02

TAX MAP
TOWN OF COLESVILLE
BROOME COUNTY, NEW YORK

MAP DATE: 2/7/1995

GRAPHIC SCALE - 1" = 100'

084.18